

DOOR LINE

La nuova linea completa di accessori per porte

The new complete range of doors accessories.



Massima possibilità di personalizzazione - Marcatatura CE

Maximum customization options - CE marked





01

DOOR LINE
La nuova linea completa di accessori per porte
The new complete range of doors accessories

pag. 4

02

Perché scegliere DOOR LINE.
Why choosing DOOR LINE.

pag. 5

03

DOOR LINE - CONFIGURAZIONI
DOOR LINE - CONFIGURATIONS

pag. 6

04

CERNIERE
HINGES

pag. 8

05

DOPPIE MANIGLIE
DOUBLE HANDLES

pag. 21

06

CATENACCI E INCONTRI
LATCHES AND JUNCTIONS

pag. 24

07

NODI
PROFILE SECTIONS

pag. 32

08

FINITURE
FINISHING

pag. 34

DOOR LINE

La nuova linea completa di accessori per porte

The new complete range of doors accessories

01

DOOR LINE è la nuova linea di accessori firmati Master che comprende tutti i componenti necessari alla realizzazione di chiusure per porte in alluminio.

Si tratta di un ampio catalogo di soluzioni ed alternative per soddisfare tutte le esigenze del mercato in termini di design, prestazioni, versatilità e facilità di montaggio con una vasta gamma di prodotti: dalle doppie maniglie ai maniglioni, dalle cerniere ai catenacci e paletti.

DOOR LINE grazie alla sua gamma consente la massima possibilità di personalizzazione dell'infisso in funzione delle necessità tecniche ed estetiche del produttore.

DOOR LINE by Master includes all the components for the realization of aluminum door closures.

It is a wide catalogue of solutions and options to meet all market requirements in terms of design, performance, versatility and easy assembly.

Master offers a wide range of products: double handles, big handles, hinges, latches and support bolts.

DOOR LINE allows maximum chance of customization of the frame according to the technical and aesthetic needs of the manufacturer.



Perchè scegliere DOOR LINE.

Why choosing DOOR LINE.

02

Estetica / Design

DOOR LINE consente di abbinare le diverse linee di maniglie, maniglioni e cerniere per soddisfare tutte le esigenze estetiche di design. E' possibile scegliere infatti: le maniglie Comfort, la LINEA ITALIA, i Maniglioni in acciaio Inox, le cerniere della serie SLIM, NEW BIG e DINAMIKA.

DOOR LINE allows you to combine different lines of handles, big handles and hinges to meet all the aesthetic design requirements. You can choose: Comfort handles, LINEA ITALIA handles, stainless steel Big Handles and hinges of the series SLIM, NEW BIG and DINAMIKA.

Prestazioni / Performance

Le cerniere di Master, abbinare a catenacci e paletti nelle diverse configurazioni, consentono di raggiungere prestazioni elevate in termini di tenuta e resistenza. I prodotti della serie DINAMIKA sono marchiati CE per l'installazione su porte su vie di fuga.

Master hinges, combined with latches and support bolts in different configurations, allow achieving high performance in terms of tightness and resistance. The products of DINAMIKA series are CE marked for installation on doors on escape routes.

Flessibilità / Flexibility

La completezza della gamma della DOOR LINE che comprende 40 articoli in 30 varianti e moltissime finiture, consente al serramentista di poter effettuare molteplici abbinamenti e configurazioni.

The completeness of this DOOR LINE range, that includes 40 items in 30 variants and many finishes, makes possible to realize many combinations and configurations.

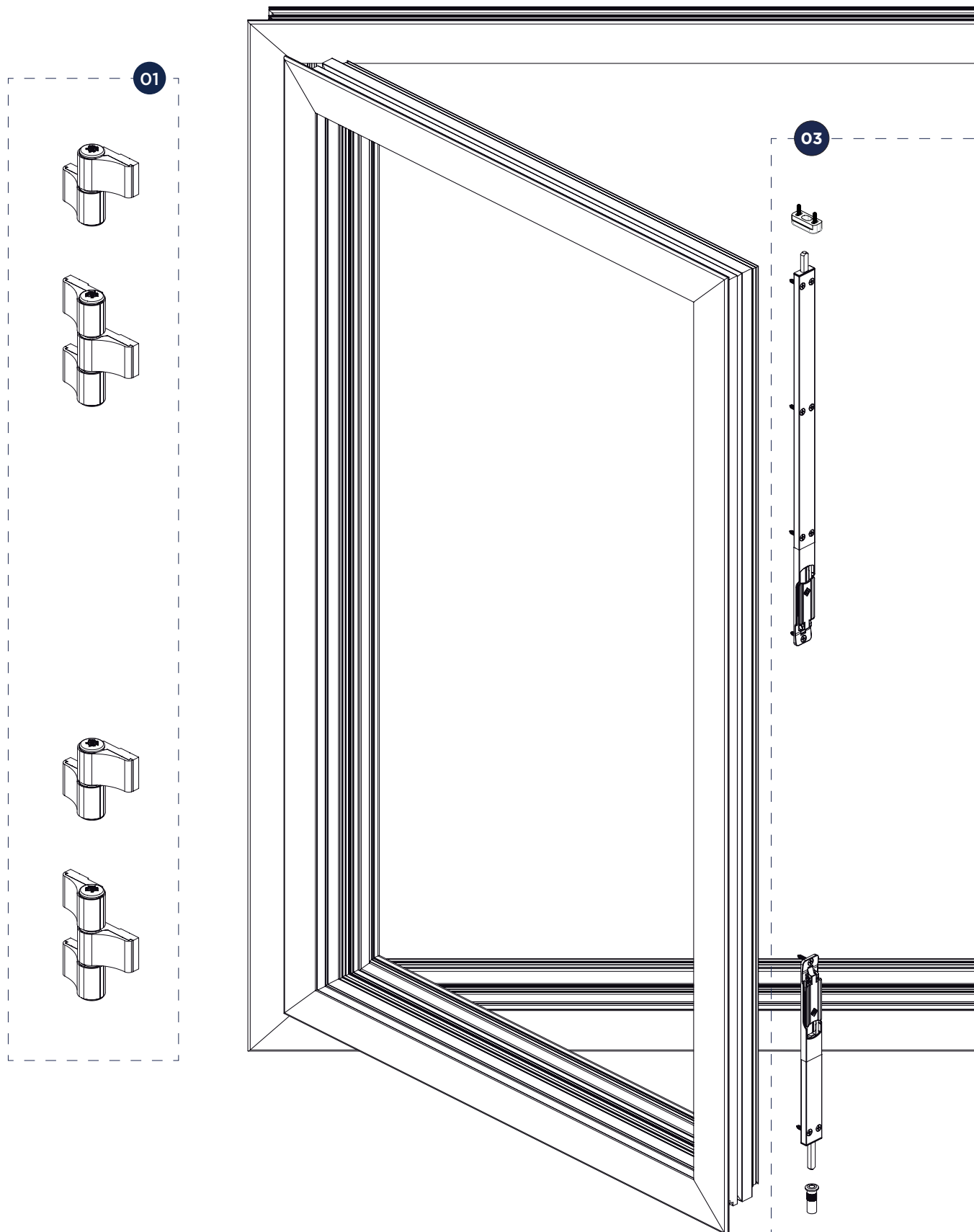
Facilità di montaggio / Easy mounting

Tutti i prodotti Master sono progettati per unire la funzionalità al design e la facilità di montaggio alla velocità d'installazione. Per questo l'azienda ha posto la massima attenzione su tutti i sistemi di fissaggio rendendo gli accessori compatibili con la maggior parte dei profili esistenti sul mercato.

All Master products are designed to combine functionality and design to easy and fast installation. This is why we focused on all fixing systems making the accessories compatible with nearly all existing profiles on the market.

LINEA PORTE - Configurazioni

DOOR LINE - Configurations



01

CERNIERE
HINGES
PAUMELLES
BISAGRAS

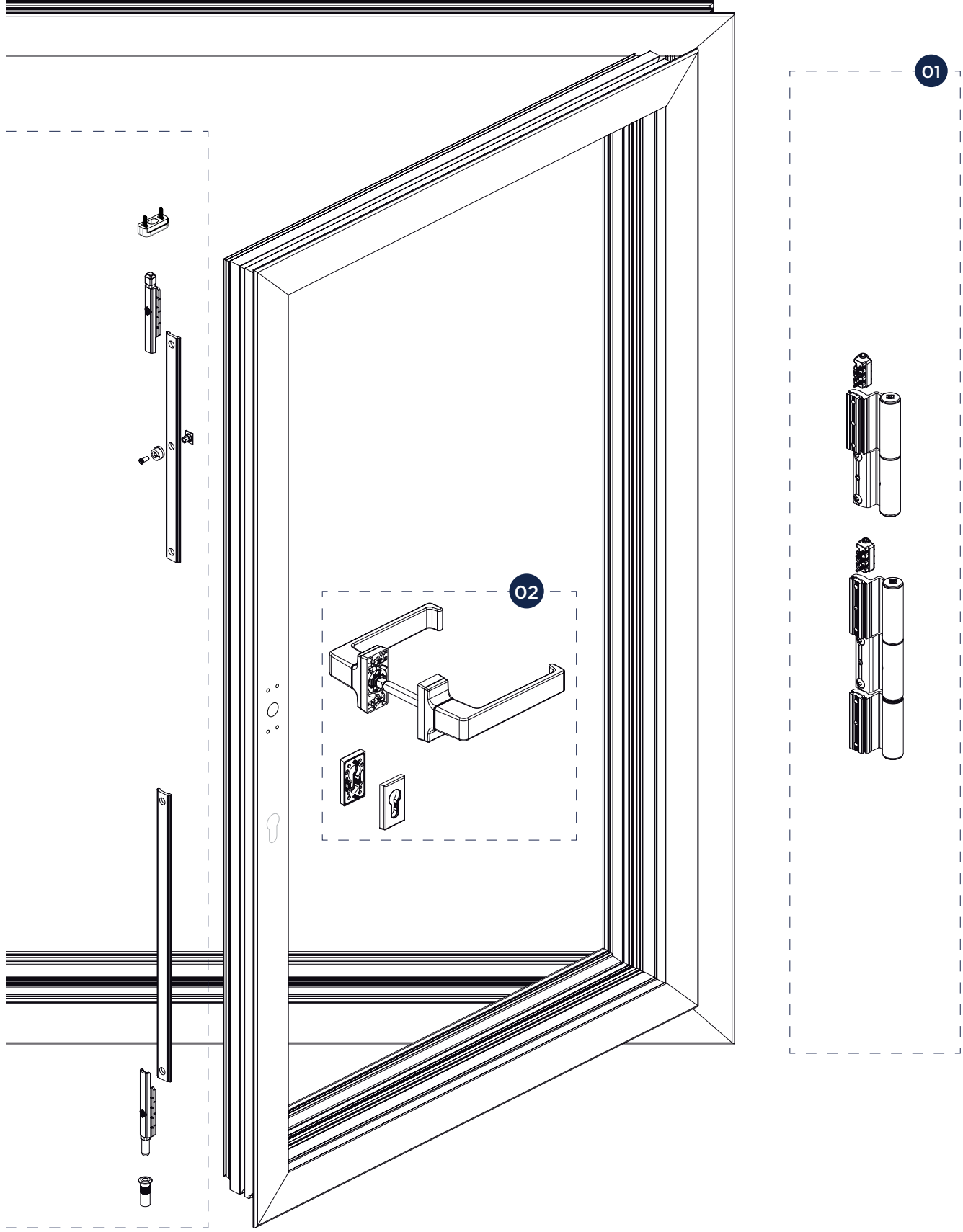
02

DOPPIA MANIGLIA
DOUBLE HANDLE
BEQUILLE DOUBLE
MANILLA DOBLE

03

CATENACCI E INCONTRI
LATCHES AND JUNCTIONS
VERROUS ET GACHES
PASADORES Y CERRADEROS

03



CERNIERE
HINGES

NEW BIG

CERNIERA PER PORTE



Cerniera per porte | Door hinge
Paumelle pour portes | Bisagra para puertas



Corpo base cerniera in alluminio estruso, carter in alluminio pressofuso, perni in acciaio inox, boccole autocentranti e viti in acciaio zincato, boccole e tappi cerniera in materiale plastico (o zama, secondo la versione), contropiastre in alluminio estruso, molla in acciaio armonico zincato.



Hinge body in extruded aluminum, casing in diecast aluminum, stainless steel pins, galvanized steel screws and selfcentering bushings, plastic hinge plugs and bushings (or zamak, depending on version), extruded aluminum strike plate, galvanized steel spring.



Corps base paumelle en aluminium extrudé, carter en aluminium moulé sous pression, pivots en acier inox, bagues à centrage automatique et vis en acier zingué, bagues et bouchons paumelle en matière plastique (ou zamak, selon la version), contreplaques en aluminium extrudé, ressort en acier harmonique zingué.

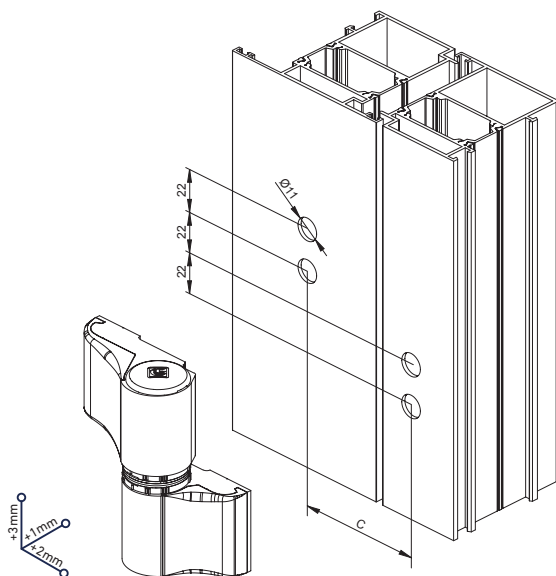
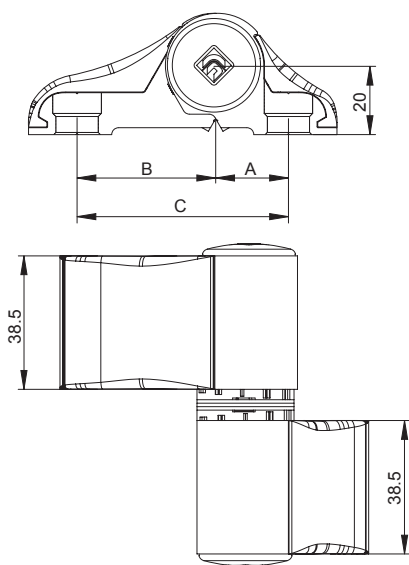


Cuerpo de base de cerradura en aluminio extruido; cárter de aluminio de fundición, pernios de acero inoxidable, casquillos autocentrantes y tornillos de acero galvanizado, casquillos y tapones de bisagra de material plástico (o zamak, de acuerdo con la versión), contraplacas de aluminio extruido, muelle de acero armónico galvanizado.



1.000.000
cycles / cicli

ART.	8000C 8001C 8002C 8003C 8004C	8000D 8001D 8002D 8003D 8004D
Imballo Package Conditionnement Embalaje	2 Pz	
Finiture disponibili Available finishes Finitions disponibles Acabados disponibles	1 2 3 4 5 6	1 2 3 4 5 6



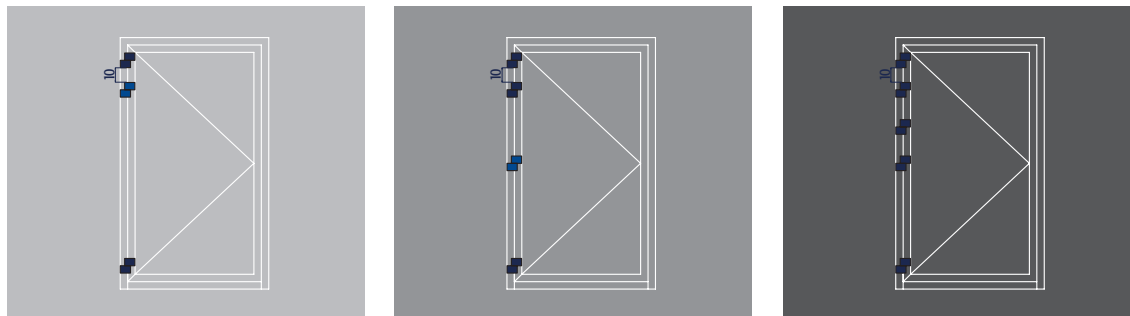
NEW BIG CARTER IN ZAMA NEW BIG WITH ZAMAK CASING			
ART	A	B	C
8000C	20.5	39.5	60
8001C	20.5	46.5	67
8002C	39.5	39.5	79
8003C	39.5	46.5	86
8004C	46.5	46.5	93

NEW BIG CARTER IN ALLUMINIO NEW BIG WITH ALLUMINIUM CASING			
ART	A	B	C
8000D	20.5	39.5	60
8001D	20.5	46.5	67
8002D	39.5	39.5	79
8003D	39.5	46.5	86
8004D	46.5	46.5	93

H	4000	100%	100%	100%	100%	100%	100%	100%	100%	100%	100%	100%	100%	100%	100%	100%
	3900	100%	100%	100%	100%	100%	100%	100%	100%	100%	100%	100%	100%	100%	100%	100%
	3800	100%	100%	100%	100%	100%	100%	100%	100%	100%	100%	100%	100%	100%	100%	100%
	3700	100%	100%	100%	100%	100%	100%	100%	100%	100%	100%	100%	100%	100%	100%	100%
	3600	100%	100%	100%	100%	100%	100%	100%	100%	100%	100%	100%	100%	100%	100%	100%
	3500	100%	100%	100%	100%	100%	100%	100%	100%	100%	100%	100%	100%	100%	100%	100%
	3400	100%	100%	100%	100%	100%	100%	100%	100%	100%	100%	100%	100%	100%	100%	100%
	3300	100%	100%	100%	100%	100%	100%	100%	100%	100%	100%	100%	100%	100%	100%	100%
	3200	100%	100%	100%	100%	100%	100%	100%	100%	100%	100%	100%	100%	100%	100%	100%
	3100	100%	100%	100%	100%	100%	100%	100%	100%	100%	100%	100%	100%	100%	100%	95%
	3000	100%	100%	100%	100%	100%	100%	100%	100%	100%	100%	100%	100%	100%	98%	90%
	2900	100%	100%	100%	100%	100%	100%	100%	100%	100%	100%	100%	100%	100%	93%	85%
	2800	100%	100%	100%	100%	100%	100%	100%	100%	100%	100%	100%	100%	96%	87%	80%
	2700	100%	100%	100%	100%	100%	100%	100%	100%	100%	100%	100%	99%	90%	82%	75%
	2600	100%	100%	100%	100%	100%	100%	100%	100%	100%	100%	100%	93%	84%	77%	70%
	2500	100%	100%	100%	100%	100%	100%	100%	100%	100%	100%	96%	87%	79%	72%	65%
	2400	100%	100%	100%	100%	100%	100%	100%	100%	100%	100%	90%	81%	73%	66%	60%
	2300	100%	100%	100%	100%	100%	100%	100%	100%	100%	93%	84%	75%	68%	61%	55%
	2200	100%	100%	100%	100%	100%	100%	100%	100%	97%	87%	78%	69%	62%	56%	50%
	2100	100%	100%	100%	100%	100%	100%	100%	100%	90%	80%	71%	64%	57%	51%	45%
	2000	100%	100%	100%	100%	100%	100%	100%	94%	83%	73%	65%	58%	51%	45%	40%
	1900	100%	100%	100%	100%	100%	100%	98%	86%	76%	67%	59%	52%	46%	40%	35%
	1800	100%	100%	100%	100%	100%	100%	90%	78%	69%	60%	53%	46%	40%	35%	30%
	1700	100%	100%	100%	100%	100%	95%	82%	71%	61%	53%	46%	40%	34%	29%	25%
	1600	100%	100%	100%	100%	100%	85%	73%	63%	54%	47%	40%	34%	29%	24%	20%
	1500	100%	100%	100%	100%	90%	76%	65%	55%	47%	40%	34%	28%	23%	N.D.	N.D.
	1400	100%	100%	100%	96%	80%	67%	57%	48%	40%	33%	28%	22%	N.D.	N.D.	N.D.
	1300	100%	100%	100%	84%	70%	58%	48%	40%	33%	27%	21%	N.D.	N.D.	N.D.	N.D.
1200	100%	100%	90%	73%	60%	49%	40%	32%	26%	20%	N.D.	N.D.	N.D.	N.D.	N.D.	
1100	100%	97%	78%	62%	50%	40%	32%	25%	N.D.	N.D.	N.D.	N.D.	N.D.	N.D.	N.D.	
1000	100%	83%	65%	51%	40%	31%	23%	N.D.	N.D.	N.D.	N.D.	N.D.	N.D.	N.D.	N.D.	
		600	700	800	900	1000	1100	1200	1300	1400	1500	1600	1700	1800	1900	2000
		L														

Indipendentemente dal peso della porta, per porte sottoposte ad un intenso utilizzo come nel caso di edifici aperti al pubblico, porte con chiudiporta o porte ad azionamento motorizzato il limite di impiego è limitato a H 3000 e L 1400 con l'utilizzo della terza o quarta cerniera (cerniera blu) come da diagramma.

Whatever the door weight; doors subject to use building, doors with closers or automatic doors the range of application is limited to H 3000 and L 1400. Moreover the addition hinge (blue hinge) is mandatory. SEE BELOW IN CHART.



ART	PORTATA LOAD CAPACITY
8000X	100% = 120kg
8001X	100% = 120 kg
8002X	100% = 120 kg
8003X	100% = 100 kg
8004X	100% = 100 kg

- Esempio
1. Dim. LxH (WxH) 1200x2200 = 100% Portata 2 cerniere (Load Capacity 2 hinges)
 2. Dim. LxH (WxH) 1600x2200 = 100% Portata 3 cerniere (Load Capacity 3 hinges)
 3. Dim. LxH (WxH) 1400x3300 = 100% Portata 4 cerniere (Load Capacity 4 hinges)

I diagrammi hanno validità per spessore profili | Load charts is for profiles thickness \geq a 1,7 mm

DINAMIKA

CERNIERA A 2 E 3 ALI PER PORTE CON REGOLAZIONI INDIPENDENTI (BREVETTATA)



Cerniera per porte | Door hinge
Paumelle pour portes | Bisagra para puertas



Corpo base cerniera, carter, contropiastra, gradini e dima in alluminio estruso. Perni di centraggio e grani di fissaggio in Acciaio Inox AISI 303. Viti di fissaggio e grano di regolazione in Acciaio Zincato. Boccole in Zama 12. Boccole in Derlyn. Tappi cerniera in materiale plastico (Nylon Pa6). Molla in acciaio armonico zincato.



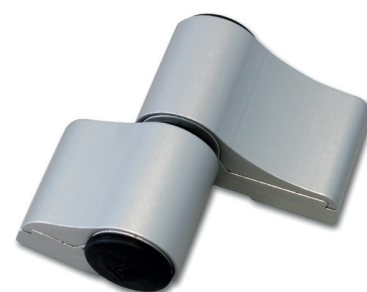
Hinge body, carter, counterplate, thickness and template in extruded aluminium. Centering pins and fixing set-screws in AISI 303 stainless steel. Fixing screws and adjustment set-screw in galvanized steel. Bushes in zamak 12. Bushes in Derlyn. Bushes in Derlyn. Hinge plugs in plastic (Nylon Pa6). Spring in harmonic galvanized steel.



Corps de manœuvre, carter, contreplaque, cale set gabarit en aluminium extrudé. Pivots de centrage et grains de fixation en Acier Inox AISI 303. Vis de fixation et grain de réglage en Acier Zingué. Bagues en zamak 12. Bagues en Derlyn. Bouchons paumelle en matériau plastique (Nylon Pa6). Ressort en acier harmonique zingué.

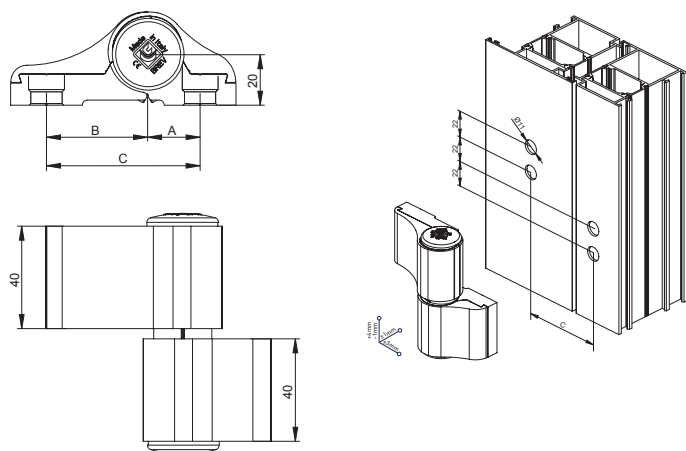


Cuerpo de la bisagra, carter, contraplaca, espesor y plantilla en aluminio extruido. Pernos de centrado y prisioneros de fijación en acero inoxidable AISI 303. Tornillos de fijación y prisionero de regulación en acero cincado. Casquillos en Derlyn. Tapones de la bisagra en material plástico (Nylon Pa6). Muelle en acero armónico cincado.

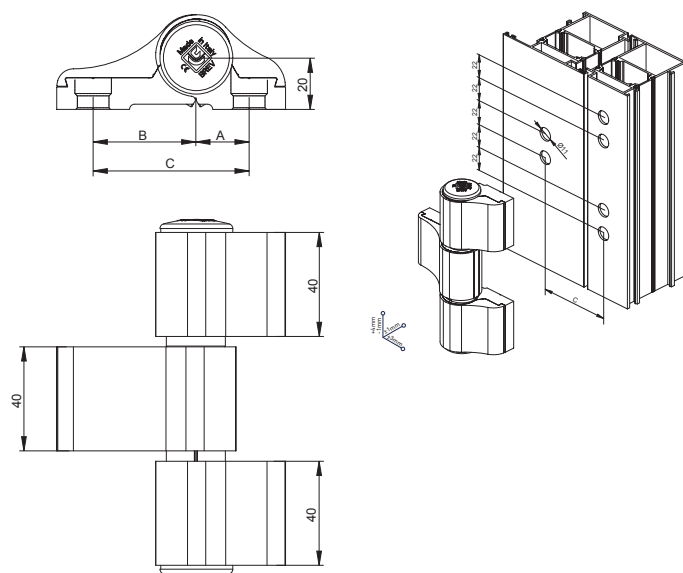


ART.	8010 8011 8012 8013 8014	8010.11 8011.11 8012.11 8013.11 8014.11
Imballo Package Conditionnement Embalaje	2 PZ	
Finiture disponibili Available finishes Finitions disponibles Acabados disponibles	1 2 3 4 5 6	1 2 3 4 5 6

Art. 801X



Art. 801X.1X



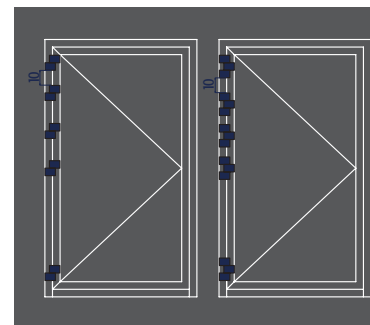
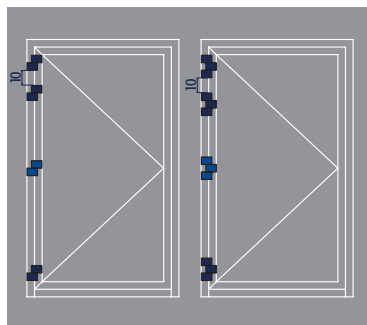
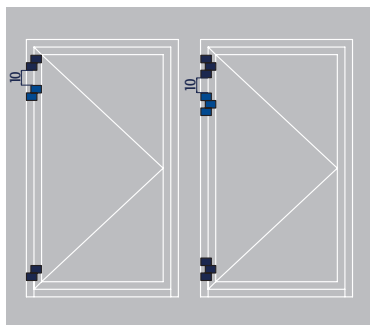
DINAMIKA 2 ALI DINAMIKA 2 WING			
ART	A	B	C
8010	20.5	39.5	60
8011	20.5	46.5	67
8012	39.5	39.5	79
8013	39.5	46.5	86
8014	46.5	46.5	93

DINAMIKA 3 ALI DINAMIKA 3 WING			
ART	A	B	C
8010.11	20.5	39.5	60
8011.11	20.5	46.5	67
8012.11	39.5	39.5	79
8013.11	39.5	46.5	86
8014.11	46.5	46.5	93

H	4000	100%	100%	100%	100%	100%	100%	100%	100%	100%	100%	100%	100%	100%	100%	
	3900	100%	100%	100%	100%	100%	100%	100%	100%	100%	100%	100%	100%	100%	100%	
	3800	100%	100%	100%	100%	100%	100%	100%	100%	100%	100%	100%	100%	100%	100%	
	3700	100%	100%	100%	100%	100%	100%	100%	100%	100%	100%	100%	100%	100%	100%	
	3600	100%	100%	100%	100%	100%	100%	100%	100%	100%	100%	100%	100%	100%	100%	
	3500	100%	100%	100%	100%	100%	100%	100%	100%	100%	100%	100%	100%	100%	100%	
	3400	100%	100%	100%	100%	100%	100%	100%	100%	100%	100%	100%	100%	100%	100%	
	3300	100%	100%	100%	100%	100%	100%	100%	100%	100%	100%	100%	100%	100%	100%	
	3200	100%	100%	100%	100%	100%	100%	100%	100%	100%	100%	100%	100%	100%	100%	
	3100	100%	100%	100%	100%	100%	100%	100%	100%	100%	100%	100%	100%	100%	95%	
	3000	100%	100%	100%	100%	100%	100%	100%	100%	100%	100%	100%	100%	98%	90%	
	2900	100%	100%	100%	100%	100%	100%	100%	100%	100%	100%	100%	100%	93%	85%	
	2800	100%	100%	100%	100%	100%	100%	100%	100%	100%	100%	100%	96%	87%	80%	
	2700	100%	100%	100%	100%	100%	100%	100%	100%	100%	100%	99%	90%	82%	75%	
	2600	100%	100%	100%	100%	100%	100%	100%	100%	100%	100%	93%	84%	77%	70%	
	2500	100%	100%	100%	100%	100%	100%	100%	100%	100%	96%	87%	79%	72%	65%	
	2400	100%	100%	100%	100%	100%	100%	100%	100%	100%	90%	81%	73%	66%	60%	
	2300	100%	100%	100%	100%	100%	100%	100%	100%	93%	84%	75%	68%	61%	55%	
	2200	100%	100%	100%	100%	100%	100%	100%	97%	87%	78%	69%	62%	56%	50%	
	2100	100%	100%	100%	100%	100%	100%	100%	90%	80%	71%	64%	57%	51%	45%	
	2000	100%	100%	100%	100%	100%	100%	94%	83%	73%	65%	58%	51%	45%	40%	
	1900	100%	100%	100%	100%	100%	98%	86%	76%	67%	59%	52%	46%	40%	35%	
	1800	100%	100%	100%	100%	100%	90%	78%	69%	60%	53%	46%	40%	35%	30%	
	1700	100%	100%	100%	100%	95%	82%	71%	61%	53%	46%	40%	34%	29%	25%	
	1600	100%	100%	100%	100%	85%	73%	63%	54%	47%	40%	34%	29%	24%	20%	
	1500	100%	100%	100%	90%	76%	65%	55%	47%	40%	34%	28%	23%	N.D.	N.D.	
	1400	100%	100%	96%	80%	67%	57%	48%	40%	33%	28%	22%	N.D.	N.D.	N.D.	
1300	100%	100%	84%	70%	58%	48%	40%	33%	27%	21%	N.D.	N.D.	N.D.	N.D.		
1200	100%	100%	90%	73%	60%	49%	40%	32%	26%	20%	N.D.	N.D.	N.D.	N.D.		
1100	100%	97%	78%	62%	50%	40%	32%	25%	N.D.	N.D.	N.D.	N.D.	N.D.	N.D.		
1000	100%	83%	65%	51%	40%	31%	23%	N.D.	N.D.	N.D.	N.D.	N.D.	N.D.	N.D.		
		600	700	800	900	1000	1100	1200	1300	1400	1500	1600	1700	1800	1900	2000
		L														

Indipendentemente dal peso della porta, per porte sottoposte ad un intenso utilizzo come nel caso di edifici aperti al pubblico, porte con chiudiporta o porte ad azionamento motorizzato il limite di impiego è limitato a H 3000 e L 1400 con l'utilizzo della terza o quarta cerniera (cerniera blu) come da diagramma.

Whatever the door weight; doors subject to use building, doors with closers or automatic doors the range of application is limited to H 3000 and L 1400. Moreover the addition hinge (blue hinge) is mandatory. SEE BELOW IN CHART.m.



Esempio

1. Dim. LxH (WxH) 1200x2200 = 100% Portata 2 cerniere (Load Capacity 2 hinges)
2. Dim. LxH (WxH) 1600x2200 = 100% Portata 3 cerniere (Load Capacity 3 hinges)
3. Dim. LxH (WxH) 1400x3300 = 100% Portata 4 cerniere (Load Capacity 4 hinges)

I diagrammi hanno validità per spessore profili | Load charts is for profiles thickness) ≥ a 1,7 mm

ART	PORTATA LOAD CAPACITY
	100% = 160kg
	100% = 200 kg

GRADINI

GRADINI PER CERNIERA PER PORTE



Gradini | Steps | Etapes | Pasos



Alluminio estruso
e vite M8 x 40/50



Extruded
aluminum,
M8 x 40/50



Aluminium
extrudé,
M8 x 40/50

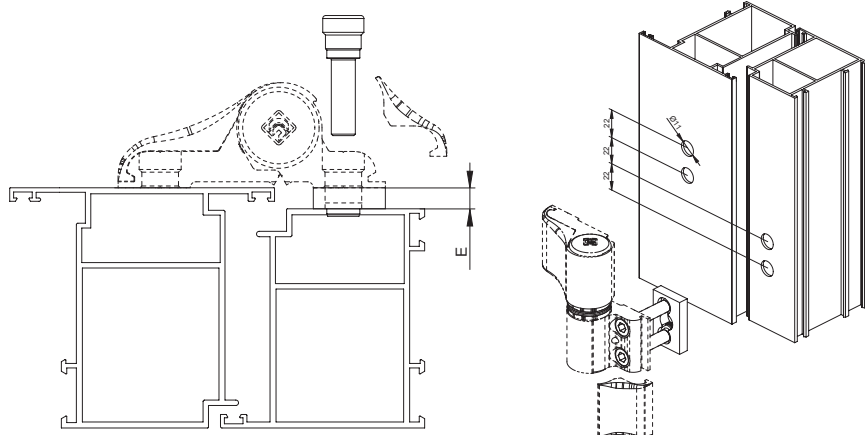


Aluminio
extruido,
M8 x 40/50



ART.	TUTTI ALL TOUS TODOS
Imballo Package Conditionnement Embalaje	12 Pz
Finiture disponibili Available finishes Finitions disponibles Acabados disponibles	1 2 3 4 5 6

Gradini Taglio freddo + viti di fissaggio
New Big step for cold profile + fixing screw

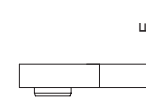
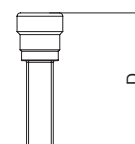


NEW BIG

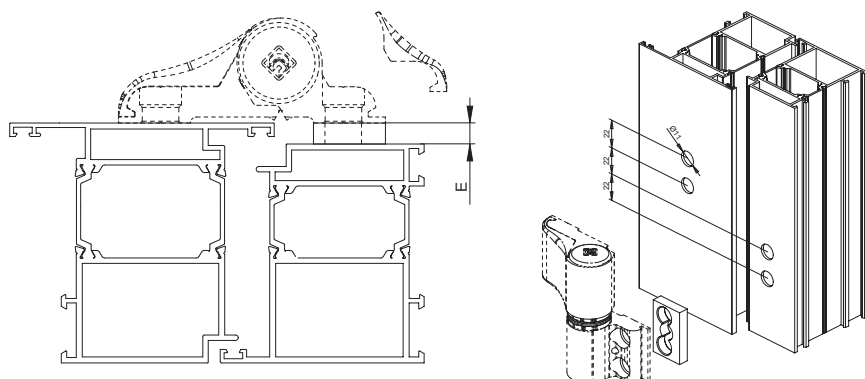
ART	D	E
8010C.5	40	7
8010C.6	40	8.5
8010C.7	40	10
8010C.8	50	16

DINAMIKA

ART	D	E
8010.5	40	7
8010.6	40	8.5
8010.7	40	10
8010.8	40	16



Gradini Taglio termico
Thermal break step

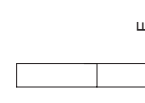


NEW BIG

ART	E
8010C.25	7
8010C.26	8.5
8010C.27	10
8010C.28	16

DINAMIKA

ART	E
8010.25	7
8010.26	8.5
8010.27	10
8010.28	16
8010.29	9
8010.30	12



FISSAGGI NEW BIG E DINAMIKA

FISSAGGI CERNIERE PORTE PROFILI FREDDI



Fissaggi cerniere porte profili freddi | Cold profile fixing | Fixation pour les profilés froids | Fijación para perfiles frío



Alluminio estruso, molla zincata e viti M8XX



Extruded aluminum, galvanized steel spring and screws M8XX



Aluminium extrudé, ressort en acier zingué et vis M8XX

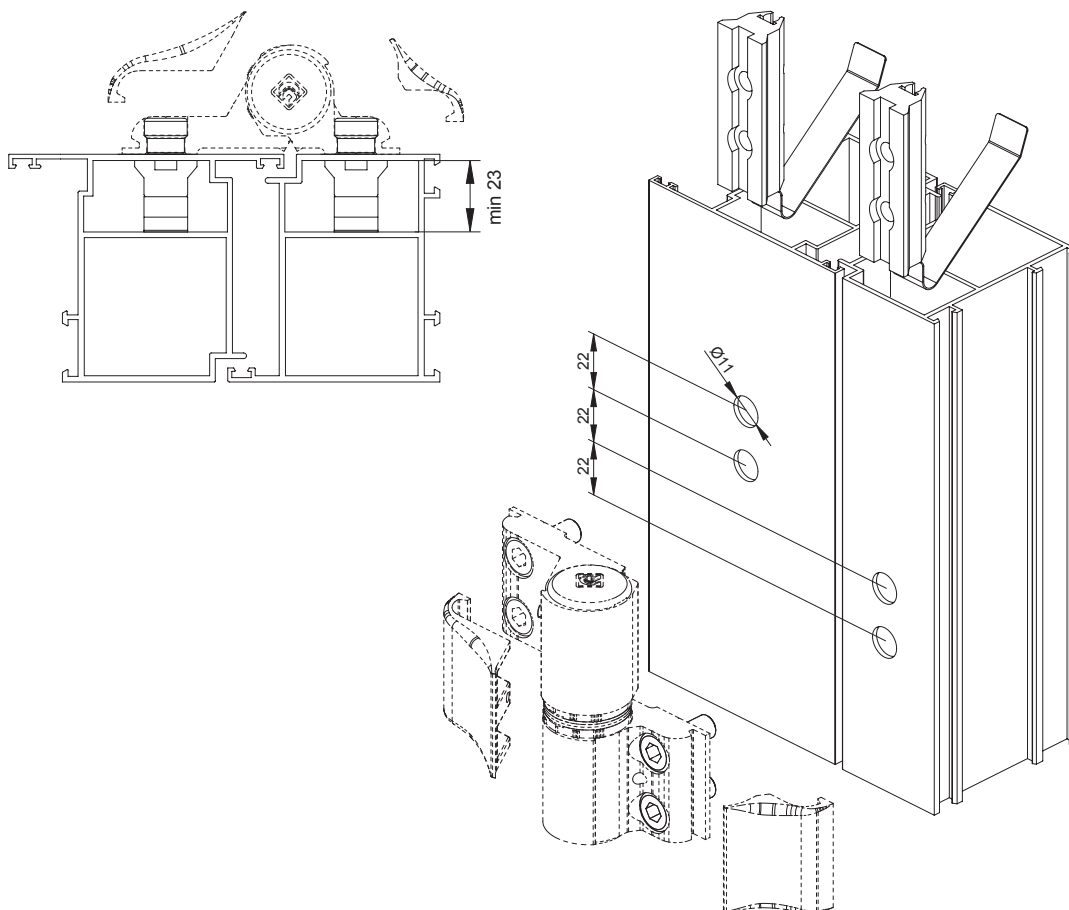


Aluminio extruido, muelle en acero cincado y tornillos M8XX

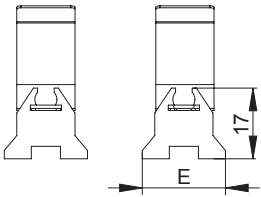
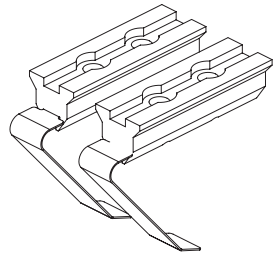


ART.	8010.17 8010.18 8000.XX 8000.XX 8010.19 8010.10 8000.39 8000.40 8000.12 8010.16	8000.9
Imballo Package Conditionnement Embalaje	12 Pz	50 Pz
Finiture disponibili Available finishes Finitions disponibles Acabados disponibles	1 2 3 4 5 6	1 2 3 4 5 6

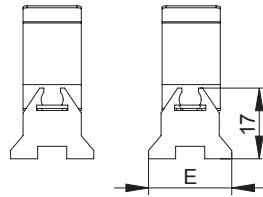
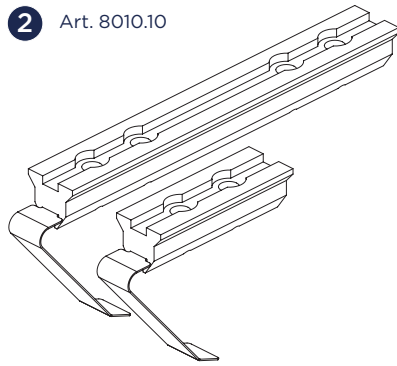
Art. 80XX.XX - Fissaggi per taglio freddo - Cold profile fixing



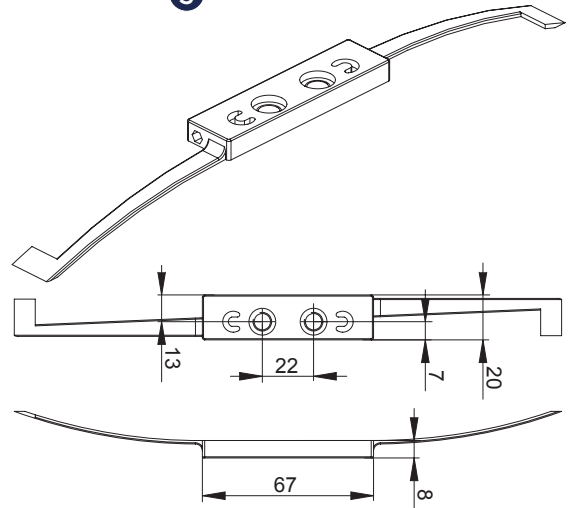
1 Art. 8000.9



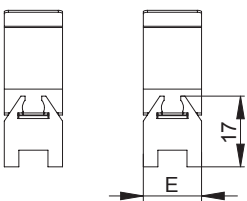
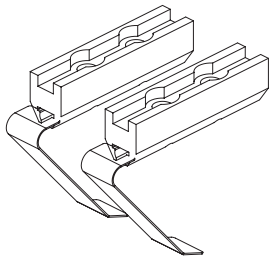
2 Art. 8010.10



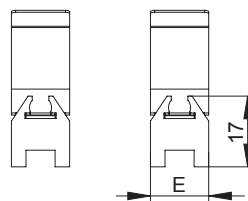
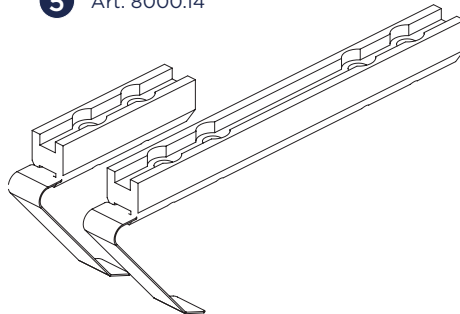
3 Art. 8000.12



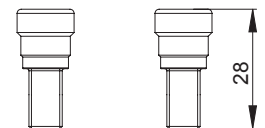
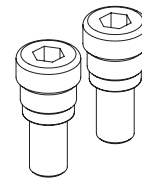
4 Art. 8000.13



5 Art. 8000.14



6 Art. 8010.16



DESCRIZIONE DESCRIPTION	ART	E
Coppia di contropiastre per cerniera a 2 ali Counterplates for 2 wings hinge	8000.9	20
Coppia di contropiastre per cerniera a 3 ali Counterplates for 3 wings hinge	8010.10	20
Contropiastre in nylon Nylon counterplate	8000.12	---
Coppia contropiastre ridotte per cerniera a 2 ali Reduced Counterplates for 2 wings hinge	8000.13	14
Kit contropiastre ridotte per cerniera a 3 ali Reduced counterplates for 3 wings hinge	8000.14	14
Vite di fissaggio M8 x 28mm (2 pz) Fixing screws M8 X 28mm (2 pz)	8010.16	---

1

2

3

4

5

6

DESCRIZIONE DESCRIPTION	ART	E
Kit contropiastre per cerniera a 2 ali con viti Counterplates for 2 wings hinge with screws	8010.17	20
Kit contropiastre per cerniera a 3 ali con viti Counterplates for 3 wings hinge with screws	8010.10	20
Kit contropiastre ridotte per cerniera a 2 ali con viti Reduced Counterplates for 2 wings hinge with screws	8000.39	14
Kit contropiastre ridotte per cerniera a 3 ali con viti Reduced counterplates for 3 wings hinge with screws	8000.40	14
Contropiastre in nylon con viti Nylon counterplate with screws	8010.19	---

1 + 6

2 + 6

4 + 6

5 + 6

3 + 6

FISSAGGI NEW BIG E DINAMIKA

FISSAGGI CERNIERE PORTE PROFILI TAGLIO TERMICO



Fissaggi cerniere porte profili taglio termico | Thermal break fixing |
 Fixation pour les profilés à rupture thermique | Fijación para perfiles
 de corte térmico



Perni di centraggio e
 perni ad espansione
 con vite in acciaio
 zincato.



Centering pins and
 expansion bushes in
 galvanized steel.



Pivots de centrage
 et bagues de
 agrandissement en
 acier zingué

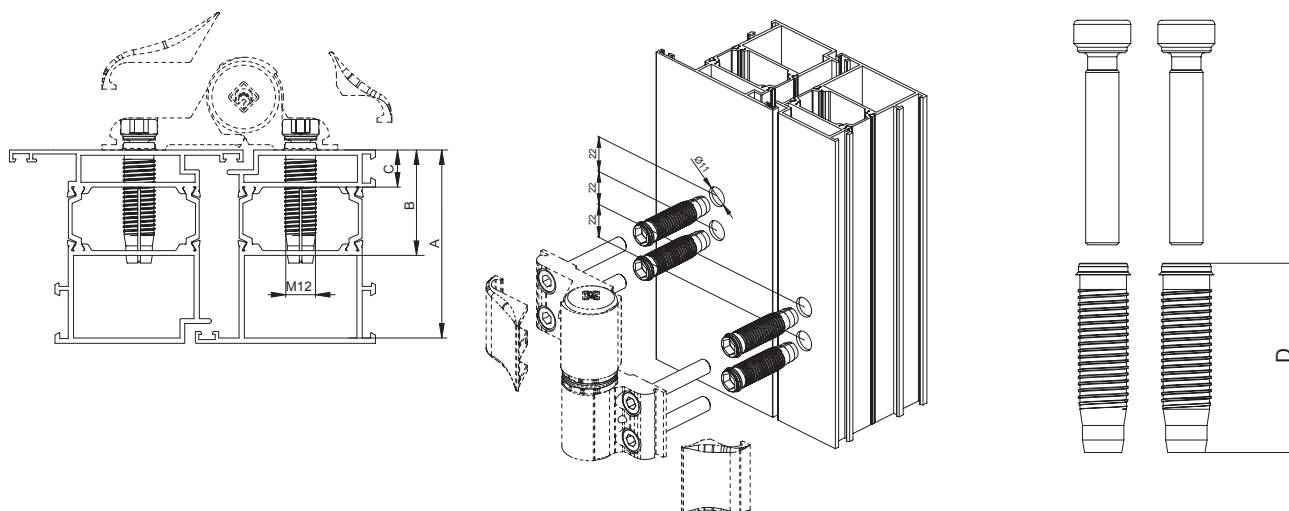


Pernios de centrado y
 expansión casquillos
 en acero cincado



ART.	8010A.13 8010A.14 8010A.15					
Imballo Package Conditionnement Embalaje	12 Cp					
Finiture disponibili Available finishes Finitions disponibles Acabados disponibles	1	2	3	4	5	6

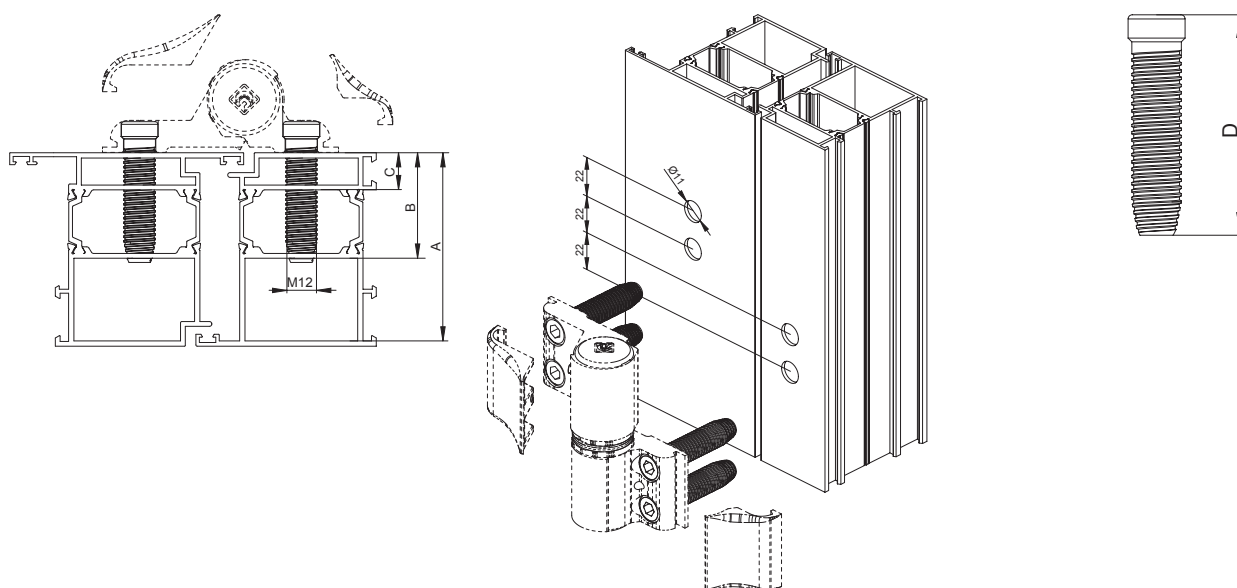
Art. 8010A.1X - Boccola ad espansione TT- Taglio termico - *Thermal break expansion fixing*



FISSAGGIO CON BOCCOLE AD ESPANSIONE TT SU PROFILI TAGLIO TERMICO FIXING BY EXPANSION BUSHES ON THERMAL BREAK PROFILES				
ART.	D	DIMENSIONE MIN. CAMERA INTERNA MIN.DIMENSION INTERNAL GROOVE (A)	DIMENSIONE MAX CAMERA DI SERRAGGIO TIGHTENING GROOVE MAX. DIMENSION (B - C)	APPLICAZIONE APPLICATION
A8010A.13	46 mm	≥ 44,5 mm	14mm - 29mm	Per ala cerniera senza gradini For wing of hinge without steps
A8010A.14	56 mm	≥ 54,5 mm	24mm - 39mm	
A8010A.15	66 mm	≥ 64,5 mm	34mm - 49mm	

Art. 8010.1X - PERNI di centraggio TT - Taglio termico - *Thermal break fixing*

ART.	8010.13 8010.14 8010.15
Imballo Package Conditionnement Embalaje	12 Pz
Finiture disponibili Available finishes Finitions disponibles Acabados disponibles	1 2 3 4 5 6



FISSAGGIO CON PERNI DI CENTRAGGIO SU PROFILI TAGLIO TERMICO FIXING BY CENTERING PINS ON THERMAL BREAK PROFILES					
ART.	D	DIMENSIONE MIN. CAMERA INTERNA MIN.DIMENSION INTERNAL GROOVE (A)	DIMENSIONE MAX CAMERA DI SERRAGGIO TIGHTENING GROOVE MAX. DIMENSION (B - C)	APPLICAZIONE APPLICATION	
A8010.13	53 mm	≥ 43 mm	≤ 31,5 mm	Per ala cerniera senza gradini For wing of hinge without steps	
A8010.14	68 mm	≥ 58 mm	≤ 46,5 mm		
A8010.15	79 mm	≥ 69 mm	≤ 57,5 mm		
A8010.13	53 mm	≥ 36 mm	≤ 24,5 mm	Per ala cerniera con gradini 8010.25 For wing of hinge with steps 8010.25	
A8010.14	68 mm	≥ 51 mm	≤ 39,5 mm		
A8010.15	79 mm	≥ 62 mm	≤ 50,5 mm		
A8010.13	53 mm	≥ 34,5 mm	≤ 23 mm	Per ala cerniera con gradini 8010.26 e 8010.29 For wing of hinge with steps 8010.26 and 8010.29	
A8010.14	68 mm	≥ 49,5 mm	≤ 38 mm		
A8010.15	79 mm	≥ 60,5 mm	≤ 49 mm		
A8010.13	53 mm	≥ 33 mm	≤ 21,5 mm	Per ala cerniera con gradini 8010.27 e 8010.30 For wing of hinge with steps 8010.27 and 8010.30	
A8010.14	68 mm	≥ 48 mm	≤ 36,5 mm		
A8010.15	79 mm	≥ 59 mm	≤ 47,5 mm		
A8010.13	53 mm	≥ 27 mm	≤ 15,5 mm	Per ala cerniera con gradini 8010.28 For wing of hinge with steps 8010.28	
A8010.14	68 mm	≥ 42 mm	≤ 30,5 mm		
A8010.15	79 mm	≥ 53 mm	≤ 41,5 mm		

DIMA CERNIERA PORTE

DIMA DI FORATURA (BREVETTATA)



Dima di foratura per cerniere porta | Drilling template for door hinges
 | Gabarit de perçage pour paumelle pour portes | Plantilla de perforación para bisagras para puertas



Dima in alluminio estruso bussole di foratura in acciaio zincato, selettori in zama, grani inox.



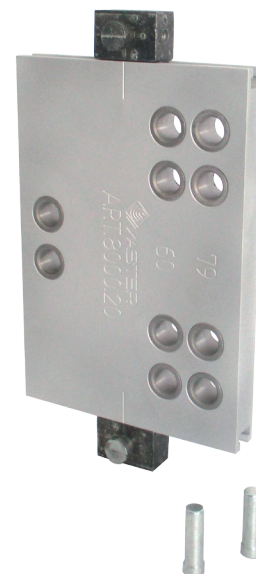
Extruded aluminum drilling template, galvanized steel centering bushes, zamak selector, inox screw without head.



Aluminium extrude, bagues en acier inox.

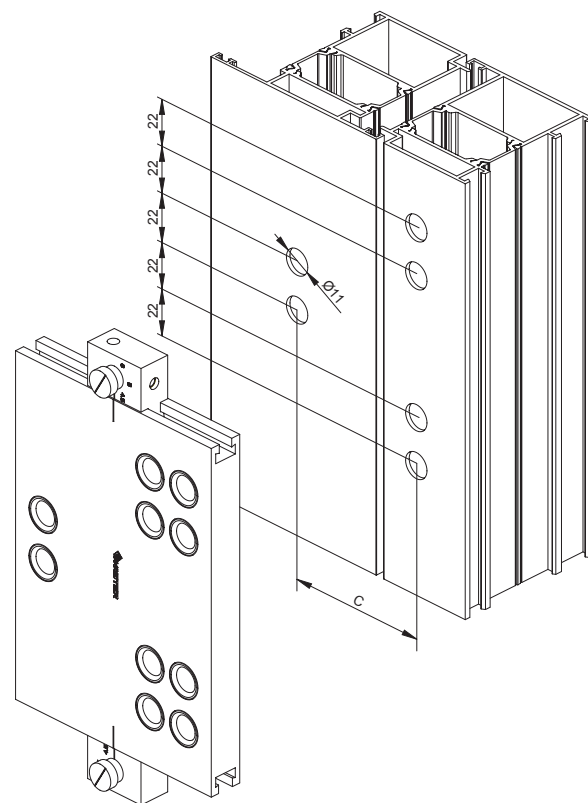
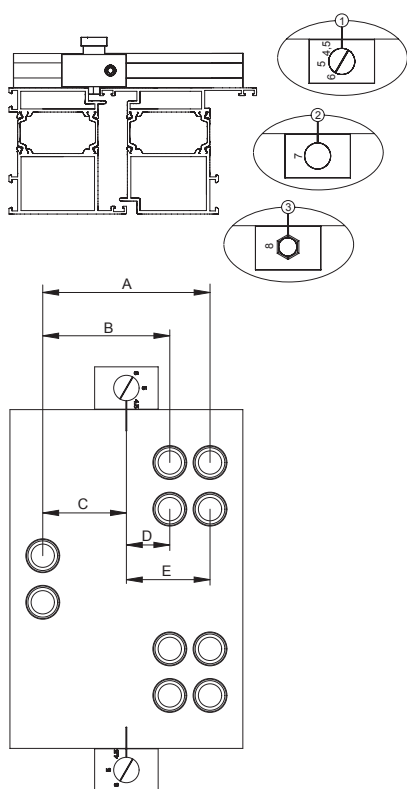


Aluminio extruido, casquillos de acero inox.



ART.	8000.20 8000.21 8000.23
Imballo Package Conditionnement Embalaje	12 Pz
Finiture disponibili Available finishes Finitions disponibles Acabados disponibles	1 2 3 4 5 6

Art. 8000.2X - Dima di foratura (BREVETTATA) | Drilling template



ART	A	B	C	D	E
8000.20	79	60	39.5	20.5	39.5
8000.21	86	67	46.5	20.5	39.5
8000.23	93	67	46.5	20.5	46.5

SLIM RAPID

CERNIERA PER PORTE REGISTRABILE CON PIASTRINA AD INFILARE



Cerniera per porte registrabile con piastrina ad infilare | Adjustable door hinge with threaded plate | Paumelle pour portes réglable avec plaque a enfiler | Bisagra para puertas regulables con placa a insertar



Cerniera e piastrine in alluminio estruso; perno, viti e grani in acciaio inox; boccola e rondelle in nylon.



Hinge and plates in extruded aluminum; stainless steel pin, screws and setscrews; nylon bushing and washers.



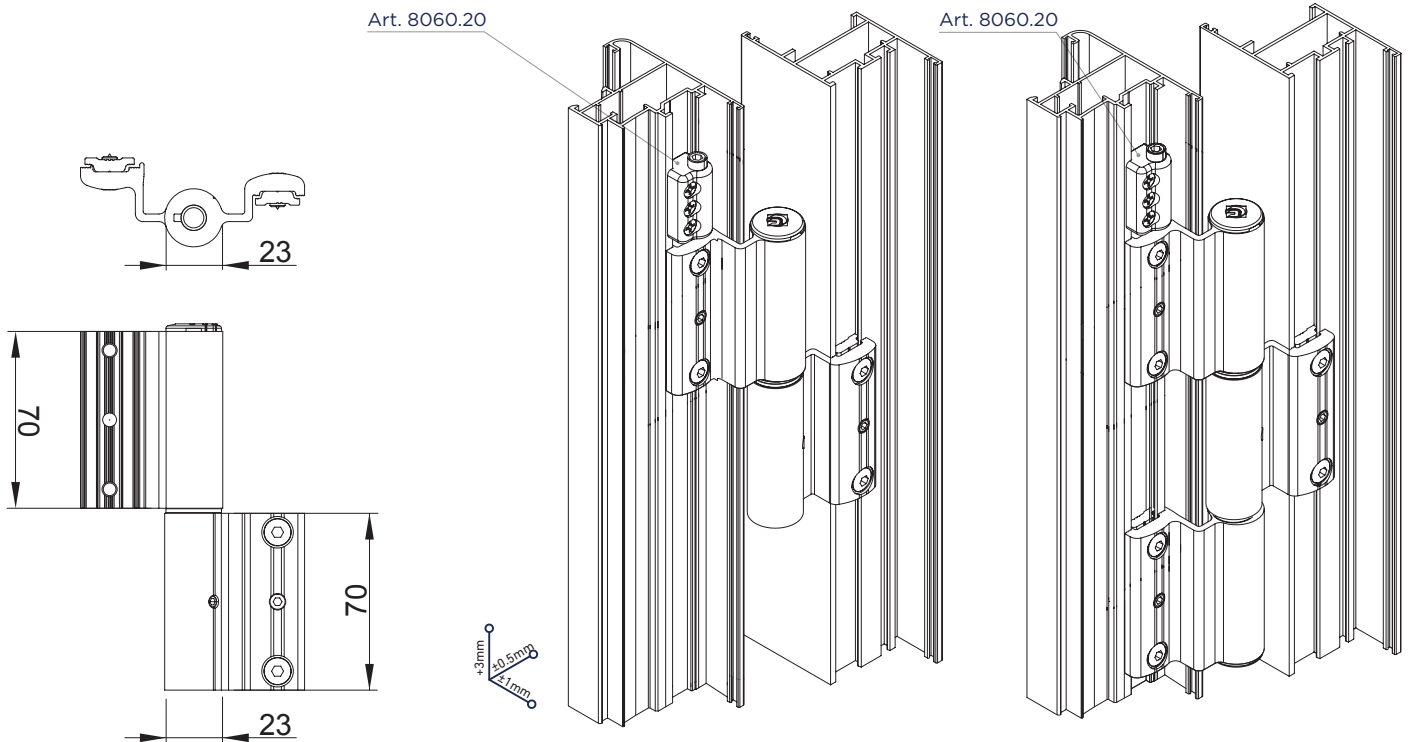
Paumelle et plaques en aluminium extrudé; pivot, vis et grains en acier inox; bague et rondelles en nylon.



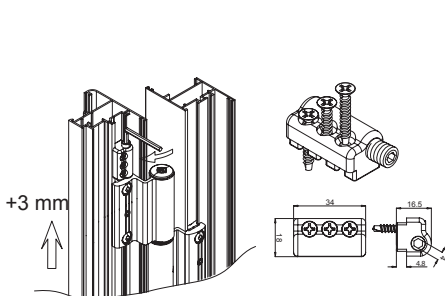
Bisagra y placas de aluminio extruido; pernio tornillos y prisioneros de acero inox; casquillo y arandelas de nylon.



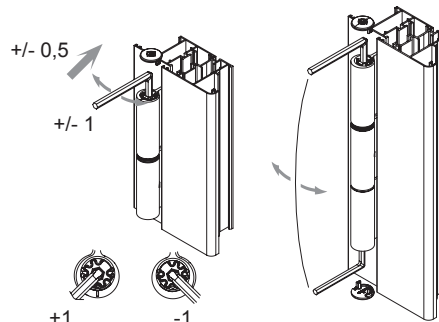
ART.	TUTTI ALL TOUS TODOS	8060.20
Imballo Package Conditionnement Embalaje	2 Pz	20 Pz
Finiture disponibili Available finishes Finitions disponibles Acabados disponibles	1 2 3 4 5 6	1 2 3 4 5 6



Art. 8060.20
Regolatore di altezza | Vertical adjuster



Regolazione pressione fuga
Horizontal and pressure adjuster



2 Ali 2 Wings	3 Ali 3 Wings	NODO* SECTION*
8060	8060.6	A01 - A02
8061	8061.6	A08
8062	8062.6	B04
8063	8063.6	A11 - A12
8064	8064.6	A05 - A06
8066	8066.6	A03 - A04

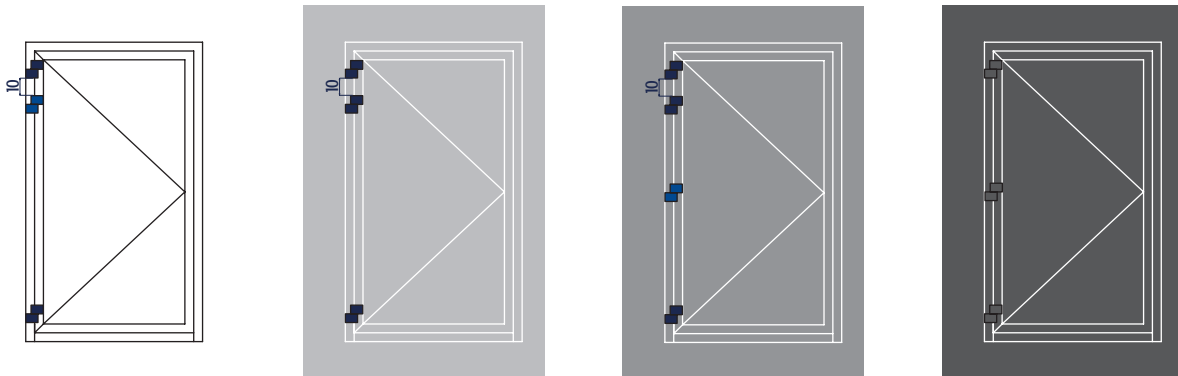
*Vedi l'indice dei nodi - pag.38
*See the index of sections - pag.38

SLIM RAPID 806X

H	3000	100%	100%	100%	100%	100%	100%	100%	100%	100%	100%	100%
	2900	100%	100%	100%	100%	100%	100%	100%	100%	100%	100%	81%
	2800	100%	100%	100%	100%	100%	100%	100%	100%	100%	100%	75%
	2700	100%	100%	100%	100%	100%	100%	100%	100%	100%	80%	69%
	2600	100%	100%	100%	100%	100%	100%	100%	100%	100%	73%	63%
	2500	100%	100%	100%	100%	100%	100%	100%	100%	79%	67%	56%
	2400	100%	100%	100%	100%	100%	100%	100%	85%	71%	60%	50%
	2300	100%	100%	100%	100%	100%	100%	100%	77%	64%	53%	50%
	2200	100%	100%	100%	100%	100%	100%	83%	69%	57%	50%	50%
	2100	100%	100%	100%	100%	100%	100%	75%	62%	50%	50%	50%
	2000	100%	100%	100%	100%	100%	82%	67%	54%	50%	50%	50%
	1900	100%	100%	100%	100%	100%	73%	58%	50%	50%	50%	N.D.
1800	100%	100%	100%	100%	80%	64%	50%	50%	50%	N.D.	N.D.	
1700	100%	100%	100%	100%	70%	55%	50%	50%	50%	N.D.	N.D.	
1600	100%	100%	100%	78%	60%	50%	50%	50%	N.D.	N.D.	N.D.	
		600	700	800	900	1000	1100	1200	1300	1400	1500	1600
		L										

Indipendentemente dal peso della porta, per porte sottoposte ad un intenso utilizzo come nel caso di edifici aperti al pubblico, porte con chiudiporta o porte ad azionamento motorizzato il limite di impiego è limitato a H 2400 e L 1000 con l'utilizzo della terza o quarta cerniera (cerniera blu) come da diagramma.

Whatever the door weight; doors subject to use building, doors with closers or automatic doors the range of application is limited to H 2400 and L 1000. Moreover the addition hinge (blue hinge) is mandatory. SEE BELOW IN CHART.m.



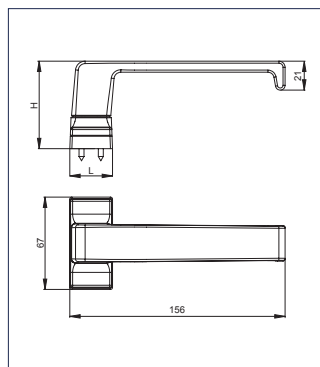
- Esempio
1. Dim. LxH (WxH) 1200x3000 = 100% Portata 2 cerniere (Load Capacity 2 hinges)
 2. Dim. LxH (WxH) 1600x2200 = 100% Portata 3 cerniere (Load Capacity 3 hinges)
 3. Dim. LxH (WxH) 1400x3000 = 100% Portata 4 cerniere (Load Capacity 4 hinges)

ART	PORTATA LOAD CAPACITY
8060 8063 8064	100% = 120kg
8061 8062	100% = 100kg
8060.6 8063.6 8064.6	100% = 160kg
8061.6 8062.6	100% = 140kg

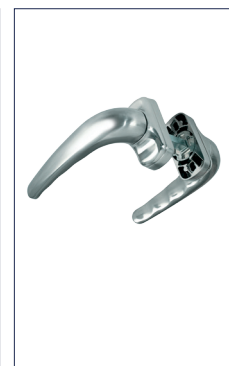
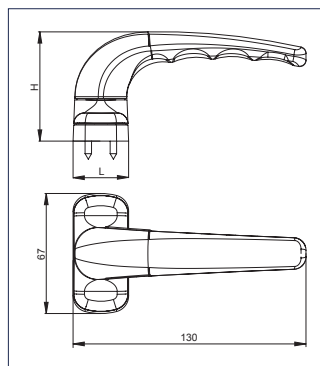
DOPPIE MANIGLIE

DOUBLE HANDLE

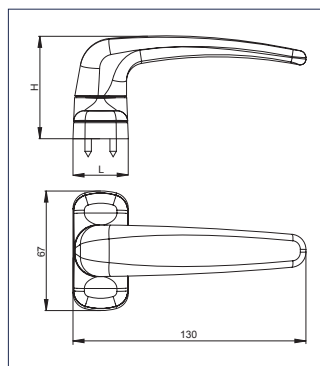
ITALIA - Doppia maniglia <i>ITALIA - Double handle</i>					
DESCRIZIONE <i>DESCRIPTION</i>	ART.	L	H	IMBALLO <i>PACKAGING</i>	FINITURE <i>FINISHING</i>
"ITALIA" Doppia maniglia <i>"ITALIA" Double handle</i>	3065	31.5	63.5	5 Cp	2,4,5,6
Kit di fissaggio con inserti filettati <i>Fixing kit with threaded inserts</i>	3060.7	---	---	20 Kit	1



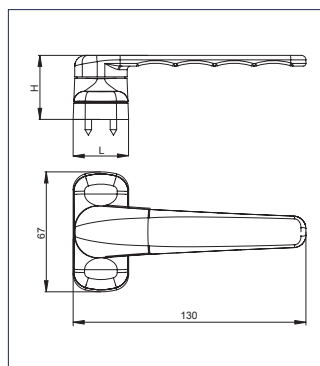
COMFORT - Doppia maniglia <i>COMFORT - Double handle</i>					
DESCRIZIONE <i>DESCRIPTION</i>	ART.	L	H	IMBALLO <i>PACKAGING</i>	FINITURE <i>FINISHING</i>
"COMFORT" Doppia maniglia <i>"COMFORT" Double handle</i>	3060	31	61	* 15 5 Cp	2,4,5,6
Kit di fissaggio con inserti filettati <i>Fixing kit with threaded inserts</i>	3060.7	---	---	20 Kit	1



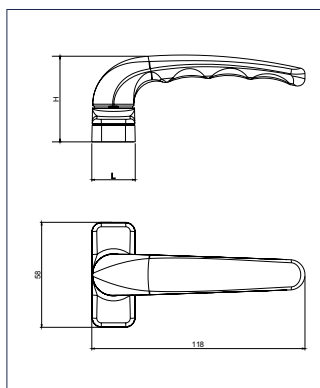
TWIST - Doppia maniglia <i>TWIST - Double handle</i>					
DESCRIZIONE <i>DESCRIPTION</i>	ART.	L	H	IMBALLO <i>PACKAGING</i>	FINITURE <i>FINISHING</i>
Doppia Maniglia "TWIST" <i>Double Handle "TWIST"</i>	3060.1	31	58	* 15 5 Cp	2,4,5,6
Kit di fissaggio con inserti filettati <i>Fixing kit with threaded inserts</i>	3060.7	---	---	20 Kit	1



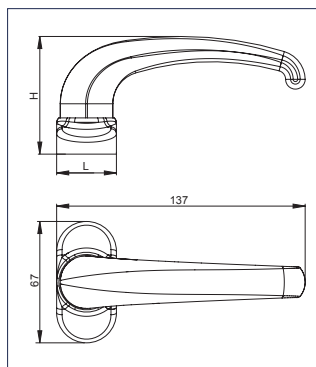
COMFORT - Doppia maniglia ribassata <i>COMFORT - Double handle with reduced grip</i>					
DESCRIZIONE <i>DESCRIPTION</i>	ART.	L	H	IMBALLO <i>PACKAGING</i>	FINITURE <i>FINISHING</i>
Doppia maniglia "COMFORT" con manico ribassato <i>Double handle "COMFORT" with reduced grip</i>	3063	31	36	* 15 5 Cp	2,4,5,6
Kit di fissaggio con inserti filettati <i>Fixing kit with threaded inserts</i>	3060.7	---	---	20 Kit	1



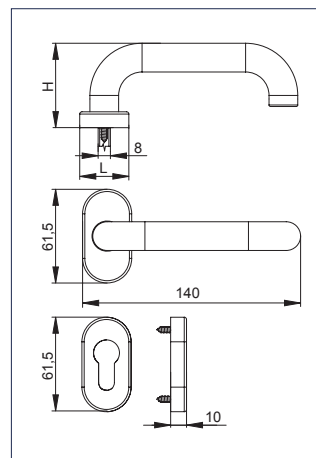
COMFORT MINI - Doppia Maniglia <i>COMFORT MINI - Double Handle</i>					
DESCRIZIONE <i>DESCRIPTION</i>	ART.	L	H	IMBALLO <i>PACKAGING</i>	FINITURE <i>FINISHING</i>
COMFORT MINI - Doppia Maniglia <i>COMFORT MINI - Double Handle</i>	3066.1	25	47	15 Cp	2-4-5



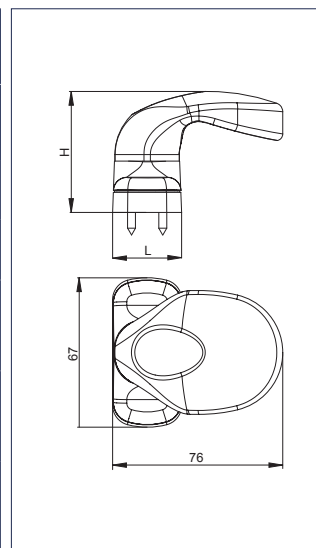
Doppia maniglia in nylon <i>Nylon double handle</i>					
DESCRIZIONE <i>DESCRIPTION</i>	ART.	L	H	IMBALLO <i>PACKAGING</i>	FINITURE <i>FINISHING</i>
Doppia maniglia in nylon <i>Nylon double handle</i>	3134	33	65	15 Cp	1



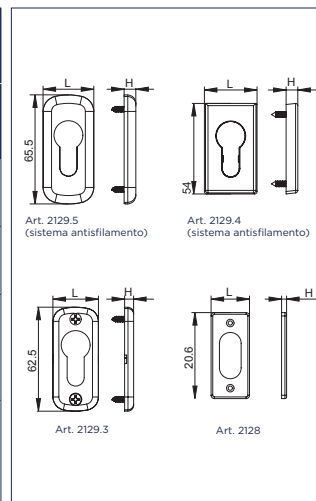
Doppia maniglia inox <i>Inox double handle</i>					
DESCRIZIONE <i>DESCRIPTION</i>	ART.	L	H	IMBALLO <i>PACKAGING</i>	FINITURE <i>FINISHING</i>
Doppia maniglia inox <i>Inox double handle</i>	3062.10	32	62	15 Cp	1



SPIN - Pomolo <i>SPIN - Knob</i>					
DESCRIZIONE <i>DESCRIPTION</i>	ART.	L	H	IMBALLO <i>PACKAGING</i>	FINITURE <i>FINISHING</i>
"SPIN" Doppio pomolo mobile <i>"SPIN" Double mobile knob</i>	3064.1	31	54.5	* 15 5 Cp	2,4,5,6
"SPIN" Doppio pomolo fisso <i>"SPIN" Double fixed knob</i>	3064.2	31	54.5	* 15 5 Cp	2,4,5,6
"SPIN" Doppio pomolo fisso + mobile <i>"SPIN" Double fixed knob + mobile</i>	3064.5	31	54.5	* 15 5 Cp	2,4,5,6
"SPIN" Pomolo fisso con maniglia Comfort <i>"SPIN" Fixed knob with Comfort handle</i>	3064.6	31	54.5	* 15 5 Cp	2,4,5,6
"SPIN" Pomolo mobile con maniglia Comfort <i>"SPIN" Mobile knob with Comfort handle</i>	3064.7	31	54.5	* 15 5 Cp	2,4,5,6



Copricilindro di sicurezza (brevettato) <i>Security cylinder cover (patented)</i>					
DESCRIZIONE <i>DESCRIPTION</i>	ART.	L	H	IMBALLO <i>PACKAGING</i>	FINITURE <i>FINISHING</i>
Copricilindro ovale in nylon <i>Nylon oval cylinder cover</i>	2128	23	3	500 Pz	1
Copricilindro sagomato in nylon <i>Nylon shaped cylinder cover</i>	2129.3	27.5	5.5	500 Pz	1
"ITALIA" Copricilindro di sicurezza sagomato in zama <i>"ITALIA" Zamak security shaped cylinder cover</i>	2129.4	31.5	7	20 Pz	1,2,4,5,6
"COMFORT" Copricilindro di sicurezza sagomato in zama <i>Zamak shaped security cylinder cover</i>	2129.5	31.5	7	20 Pz	1,2,4,5,6



CATENACCI E INCONTRI
LATCHES AND JUNCTIONS

MINI-TEX

CATENACCIO A LEVA PER FINESTRE



Catenaccio a leva | Lever bolt | Verrou a levier | Pasador de leva



Supporto, blocchetto di collegamento, leva di manovra, molle in acciaio inox, terminale e piastrina di giunzione in nylon, perno in ottone.



Support, connecting block, control lever and springs in stainless steel, nylon connecting plate and terminal, brass pin.



Support, bloc de raccordement, levier de manoeuvre, ressorts en acier inox, embout de tringle et plaque de raccordement en nylon, pivot en laiton.



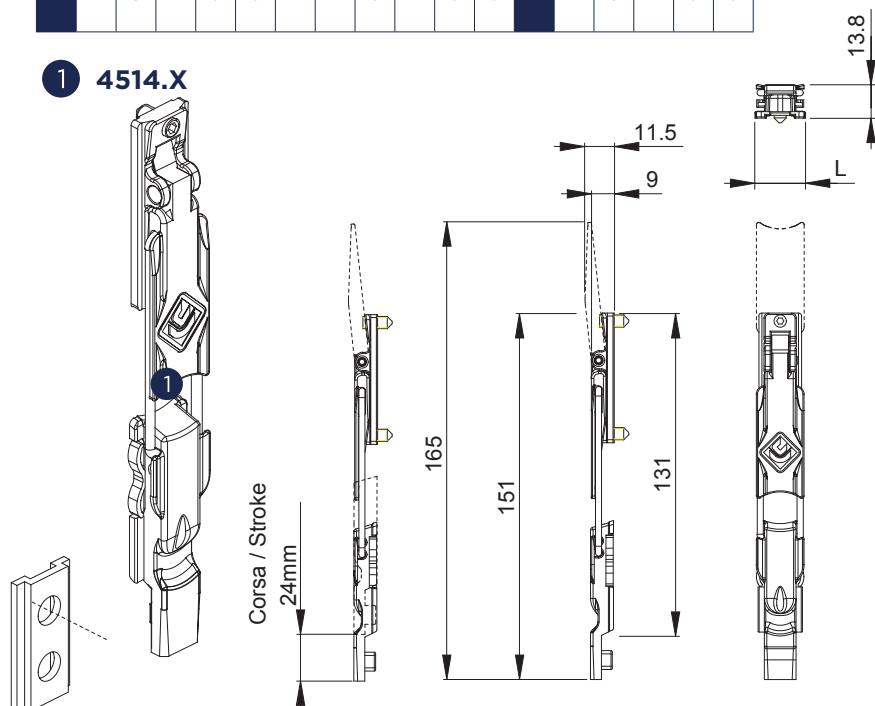
Soporte, bloque de unión, leva de maniobra, muelles de acero inox, terminal y pletina de unión de nylon, pernio de latón.



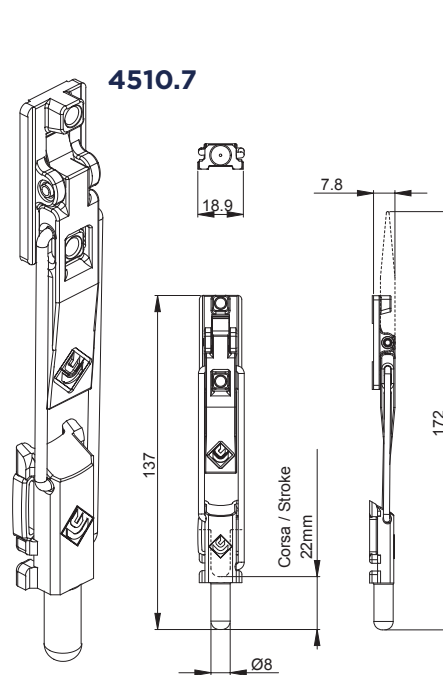
ART.	4514.1 4514.2 4514.3 4514.4 4514.5 4514.6 4514.8	4032B.20 4033B.20 4032B.21 4032B.22 4034B.21 4034B.22	4520 4521 4524	4523
Imballo Package Conditionnement Embalaje	20 Cp		100 Pz	50 Cp
Finiture disponibili Available finishes Finitions disponibles Acabados disponibles	1 2 3 4 5 6	1 2 3 4 5 6	1 2 3 4 5 6	1 2 3 4 5 6

4514.3X 4514.2X	4514.20	4510.7
20 Pz	10 Cp	10 Cp
1 2 3 4 5 6	1 2 3 4 5 6	1 2 3 4 5 6

1 4514.X



4510.7



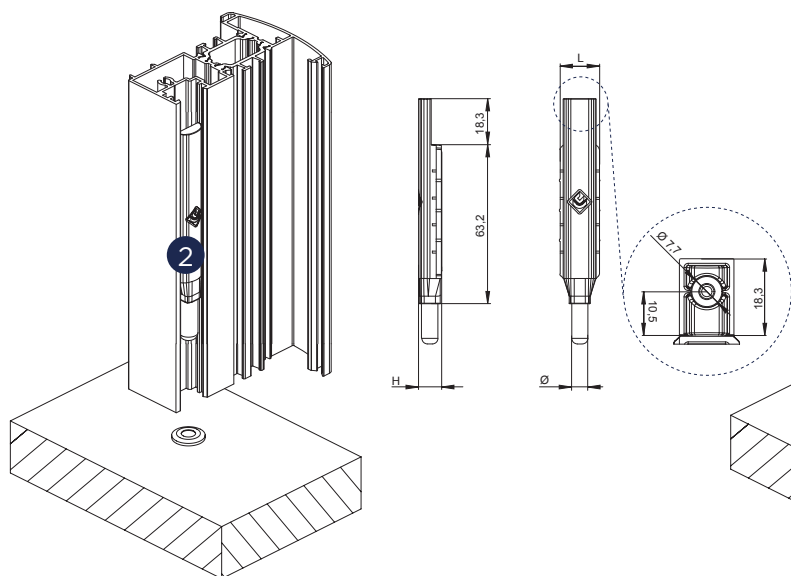
ART.	L	NODO* SECTION*
4514.1	17.6	B04
4514.2	17.6	B08 - B11
4514.3	16.3	B03

ART.	L	NODO* SECTION*
4514.4	17.6	B04
4514.5	17.6	B01
4514.6	16.3	B03

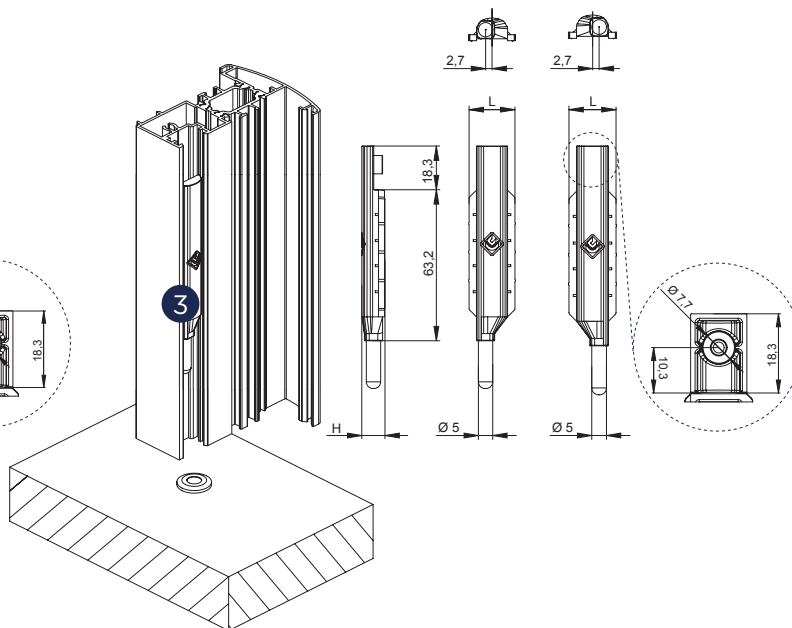
ART.	L	NODO* SECTION*
4514.8	18.3	B06 - B07 - B08 - B11

*Vedi l'indice dei nodi - pag.38
*See the index of sections - pag.38

2 403XB.20



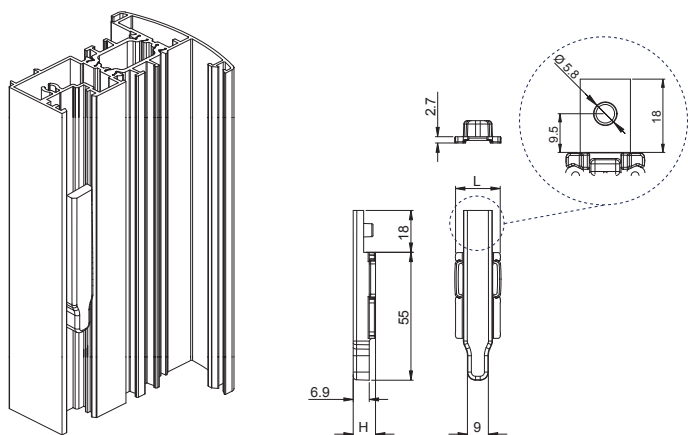
3 403XB.2X



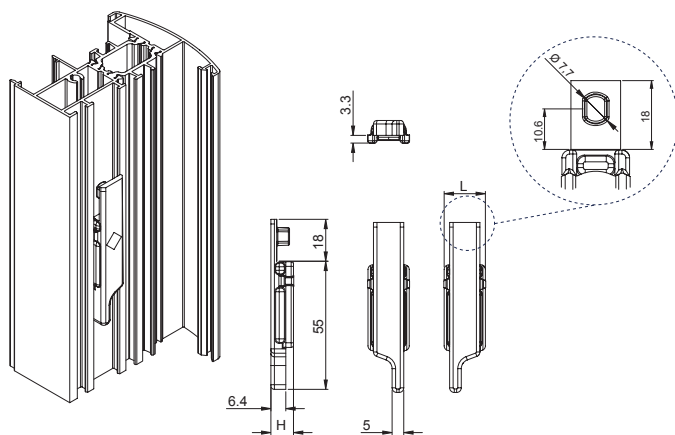
DESCRIZIONE DESCRIPTION	ART.	L	H	Ø	NODO* SECTION*
"NEW SIRIO" Terminale asta con puntale in ottone	4032B.20	19.2	9.5	8	B01 - B07 - B08
"NEW SIRIO" Rod-end with brass pin	4033B.20	15.7	9.2	8	B03

DESCRIZIONE DESCRIPTION	ART.	L	H	Ø	NODO* SECTION*
"NEW SIRIO" Terminale asta con puntale in ottone - Dx "NEW SIRIO" Rod-end with brass pin - Rx	4032B.21	19.2	9.5	6	B01 - B07 - B08
	4034B.21	17.2	10.2	7	B04
"NEW SIRIO" Terminale asta con puntale in ottone - Sx "NEW SIRIO" Rod-end with brass pin - Lx	4032B.22	19.2	9.5	6	B01 - B07 - B08
	4034B.22	17.2	10.2	7	B04

4 452X



5 4523

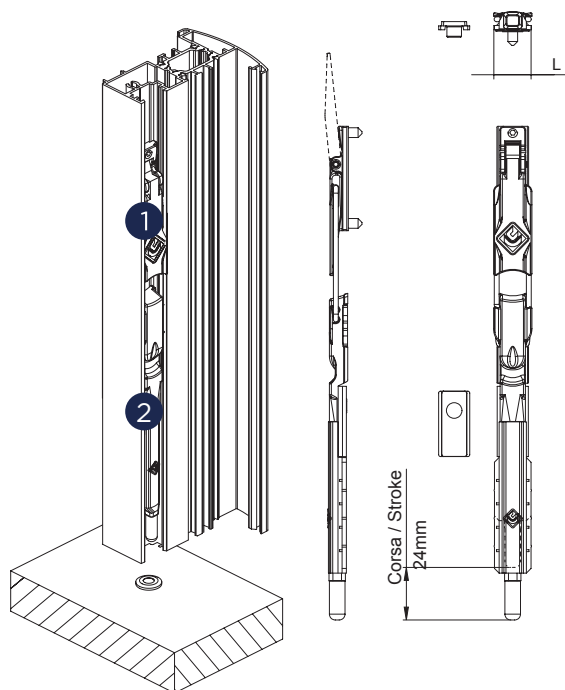


ART.	L	NODO* SECTION*
4521	19	B01
4522	16.7	B03
4524	19.2	B01
4525	18.4	B01
4520	20	B08 - B11

ART.	L	NODO* SECTION*
4523	17.7	B04

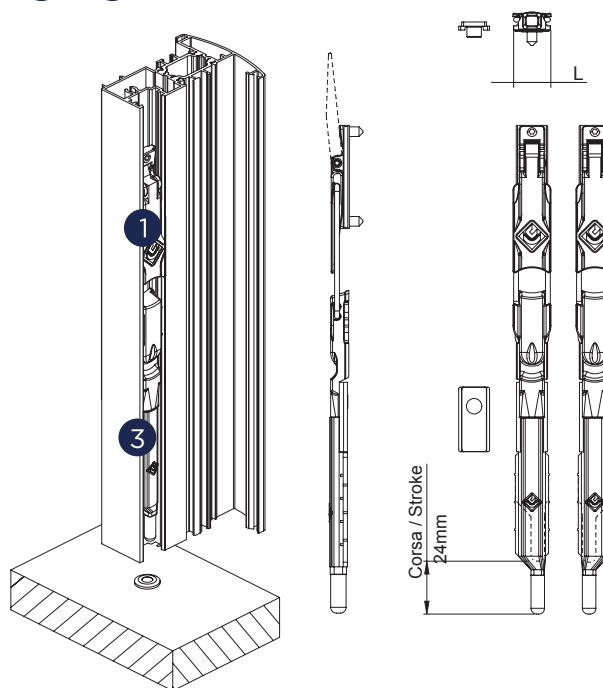
*Vedi l'indice dei nodi - pag.38
*See the index of sections - pag.38

1 + 2 4514.30 | .32 | .35



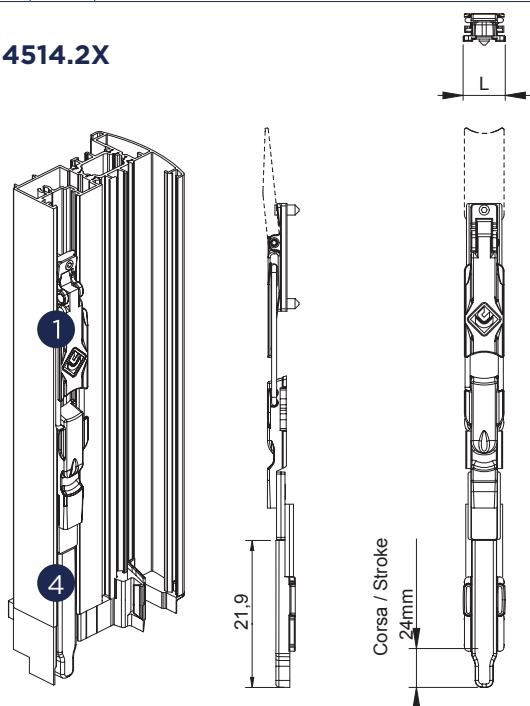
ART.	L	NODO* SECTION*
4514.30	15,9	B03
4514.32	17,6	B01
4514.35	16,3	Syntesys

1 + 3 A4014.31 | .33 | .34



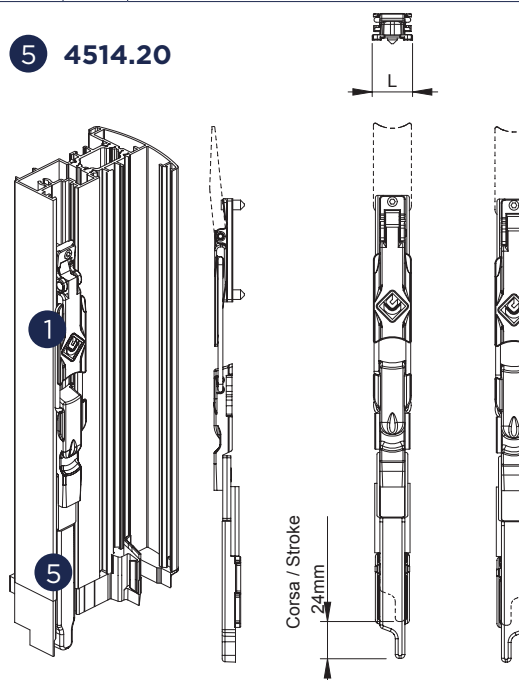
ART.	L	NODO* SECTION*
4514.31	18,2	B04
4514.33	19,2	B01
4514.34	19,2	B01

1 + 4 4514.2X



ART.	L	NODO* SECTION*
4514.21	19	B01
4514.22	16,7	B03
4514.23	19,2	B01
4514.24	18,4	B01
4514.25	20	B08 - B11

1 + 5 4514.20



ART.	L	NODO* SECTION*
4514.20	17,7	B04

*Vedi l'indice dei nodi - pag.38
*See the index of sections - pag.38

TEX 8-10

CATENACCIO A LEVA PER PORTE



Catenaccio a leva per porte | Lever bolt for doors
 Verrou a levier pour portes | Pasador de leva para puertas



Corpo principale in zama o alluminio estruso; leva di manovra in zama cromata; blocchetto terminale in zama; perno di chiusura e viti autofilettanti in acciaio inox.



Main body in extruded zamak or aluminum; chromed zamak control lever; zamak end block; stainless steel locking pin and self-tapping screws.



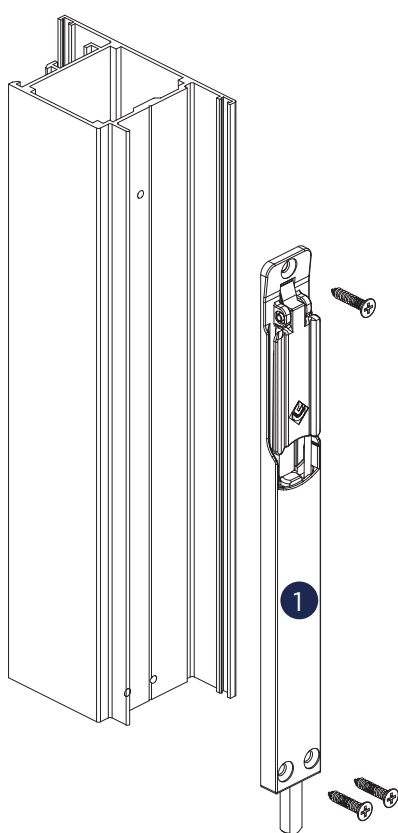
Corps principal en zamak ou en aluminium extrudé; levier de manoeuvre en zamak chromée; bloc embout de tringle en zamak; pion de fermeture et vis autotaraudeuses en acier inox.



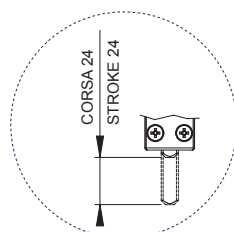
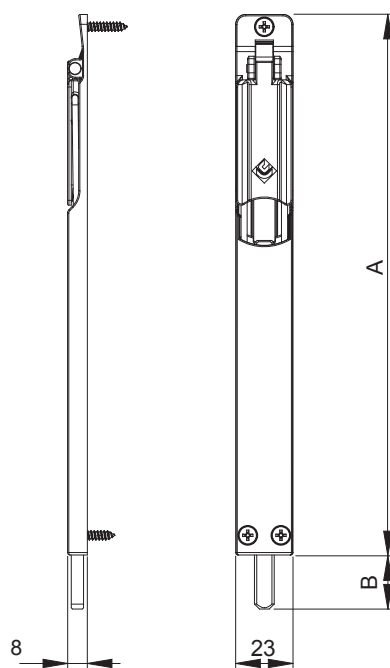
Cuerpo principal de zamac o aluminio extruido; leva de maniobra de zamac cromado; bloque terminal de zamac pernio de cierre y tornillos autorroscantes de acero inox.



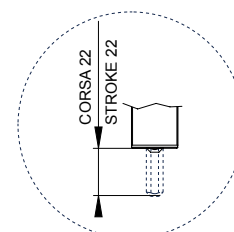
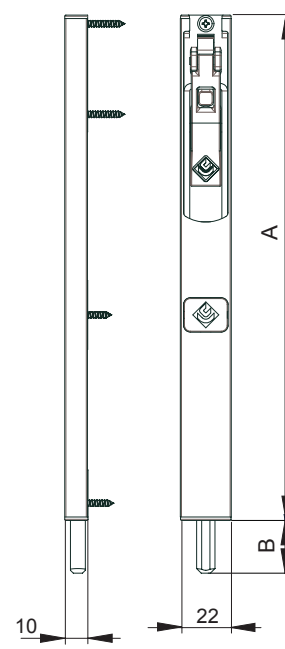
ART.	4501.50 4501.52 4504.50	4501.8 4502.8 4503.8 4504.8	4501 4501.1 4504	4502 4503 4503.1
Imballo Package Conditionnement Embalaje	20 PZ		10 PZ	
Finiture disponibili Available finishes Finitions disponibles Acabados disponibles	1 2 3 4 5 6	1 2 3 4 5 6	1 2 3 4 5 6	1 2 3 4 5 6



TEX 8



TEX 10



ART.	Ø	A	B
4501.8	8	220	22
4501.50	8	220	34
4501.52	8	220	40
4502.8	8	450	22
4503.8	8	650	22
4504.8	8	140	22
4504.50	8	140	34

ART.	Ø	A	B
4501	10	220	23
4501.1	10	208	35
4502	10	450	23

ART.	Ø	A	B
4503	10	650	23
4503.1	10	638	35
4504	10	140	23

MAXI-TEX

PALETTO AD APPOGGIO ESTERNO



Paletto ad appoggio esterno | External support bolt
Verrou a appui extérieur | Pasador de apoyo externo



Corpo principale in alluminio estruso verniciato; impugnatura e riscontro asta in zama verniciata; riscontro serratura in zama zincata; spessori-tappi coprivite-guida terminale in nylon; guida di scorrimento asta in resina acetaleica Delrin, inserti filettati in alluminio, asta di chiusura e viti di fissaggio in acciaio inox.



Main body in painted extruded aluminum; painted zamak handle and matching end; zinc-coated zamak lock control; nylon thickness, screw covers and terminal plug; sliding end guide in Delrin acetalic resin, aluminum threaded inserts, stainless steel closing end and fastening screws.



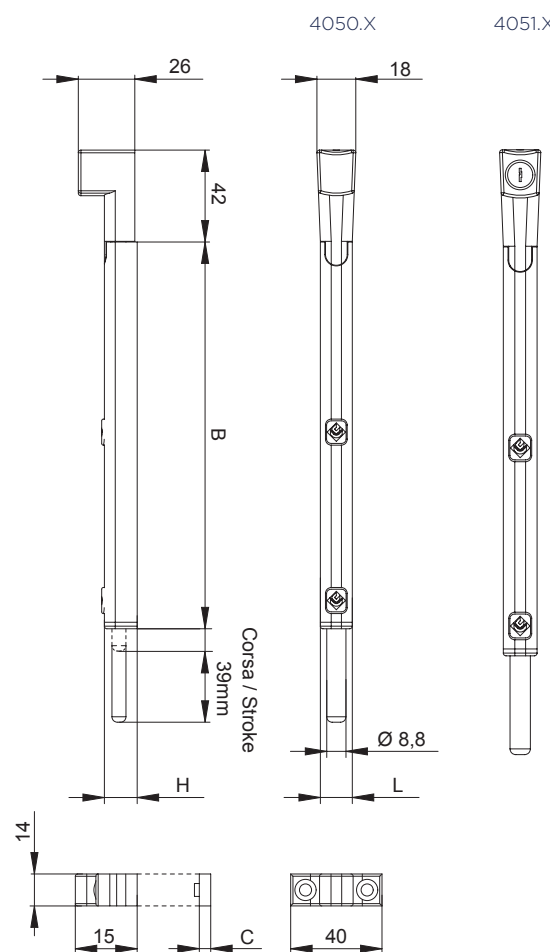
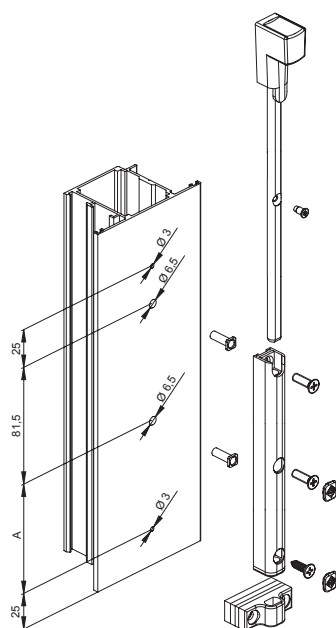
Corps principal en aluminium extrudé laqué; poignée et gâche pour tringle en zamak laqué; gâche pour serrure en zamak zingué; cales - bouchons cache-vis - guide embout de tringle en nylon; glissière tringle en résine acétalyque Delrin, parties intercalaires taraudées en aluminium, tringle de fermeture et vis de fixation en acier inox.



Cuerpo principal de aluminio extruido lacado; mango y cerradero pletina de zamak lacado; cerradero de zamak galvanizado; espesores tapones para guía terminal de nylon; guía de desplazamiento pletina de resina acetálica Delrin, inserciones roscadas de aluminio, pletina de cierre y tornillos de fijación de acero inox.



ART.	4550.1 4550.2						4551.1 4551.2					
Imballo Package Conditionnement Embalaje	10 PZ						5 PZ					
Finiture disponibili Available finishes Finitions disponibles Acabados disponibles	1	2	3	4	5	6	1	2	3	4	5	6



DESCRIZIONE DESCRIPTION	ART.	L	H	A	B	C
Paletto senza cilindro Bolt without cylinder	4550.1	14,7	15,1	77,5	178	3 / 4 / 5
Paletto senza cilindro Bolt without cylinder	4550.2	14,7	15,1	312,5	413	3 / 4 / 5
Paletto con cilindro Bolt with cylinder	4551.1	14,7	15,1	77,5	178	3 / 4 / 5
Paletto con cilindro Bolt with cylinder	4551.2	14,7	15,1	312,5	413	3 / 4 / 5

CATENACCIO A LEVA



Catenaccio a leva | Lever bolt
 Verrou a levier | Pasador de leva



Corpo in zama; asta
 in acciaio zincato.



Zamak body;
 galvanized steel end.



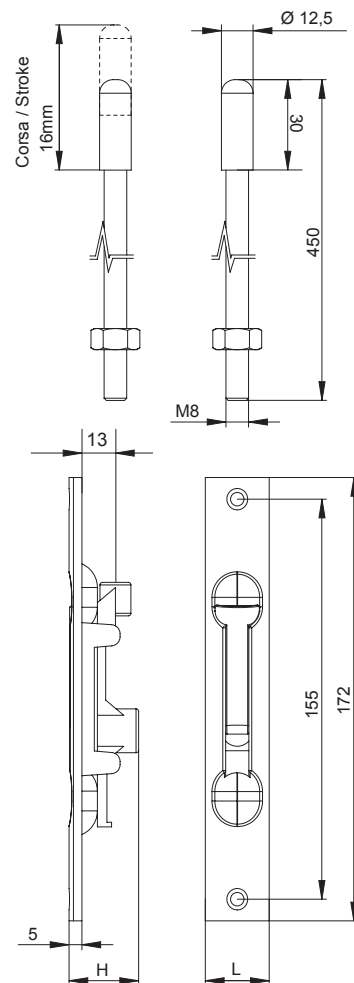
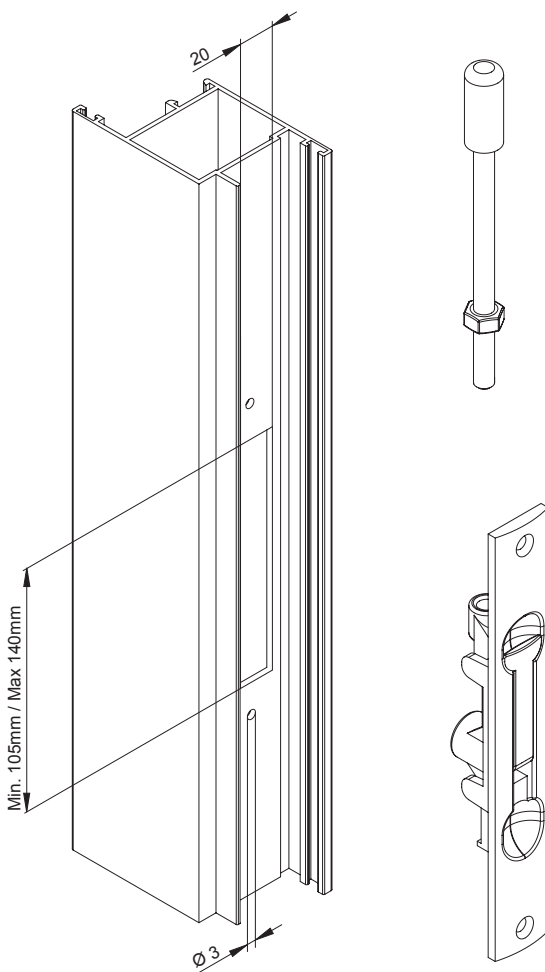
Corps en zamak;
 tringle en acier
 zingué.



Cuerpo de zamac,
 pletina de acero
 galvanizado.



ART.	4113					
Imballo Package Conditionnement Embalaje	10 Pz					
Finiture disponibili Available finishes Finitions disponibles Acabados disponibles	1	2	3	4	5	6



ART.	L	H
4113	24.8	27

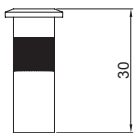
INCONTRI E FERMAPORTE

Incontri e fermaporte | Pocket junctions and doorstop
 Gaches et butoirs pour portes | Cerraderos y tope de puerta

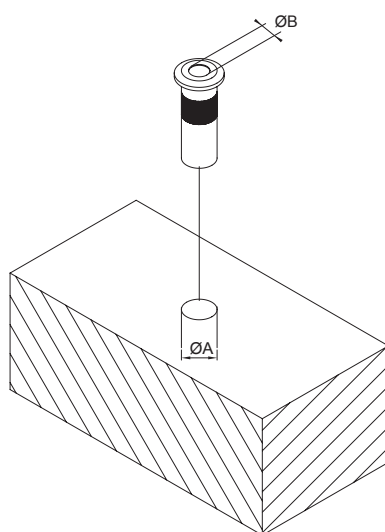
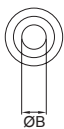


ART.	423X						4204						2303					
Imballo Package Conditionnement Embalaje	50 Pz												10 Pz					
Finiture disponibili Available finishes Finitions disponibles Acabados disponibles	1	2	3	4	5	6	1	2	3	4	5	6	1	2	3	4	5	6

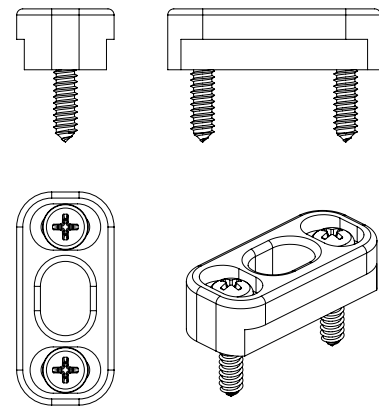
Art. 423X
 Incontro a pozzetto
 Pocket junction



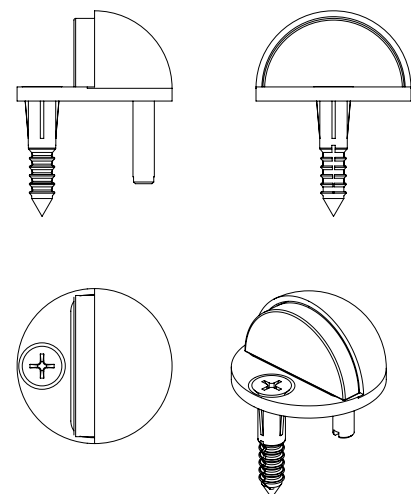
ART.	A	B
4233	9,8	6
4234	11,7	8
4235	13,5	9
4236	13,7	10
4237	16	12
4239	16	13
4238	18	14



Art. 4204
 Incontro per catenaccio TEX 8
 Junction for "TEX8" lever bolt



Art. 2303
 Fermaporte a pavimento
 Doorstop floor fixing



Nodi laterali

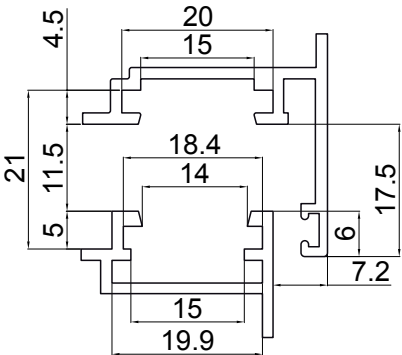
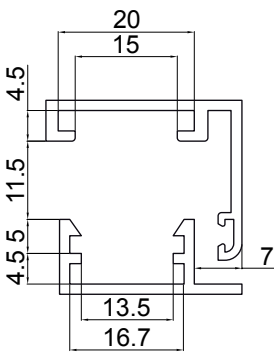
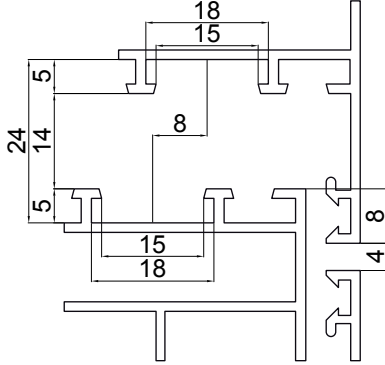
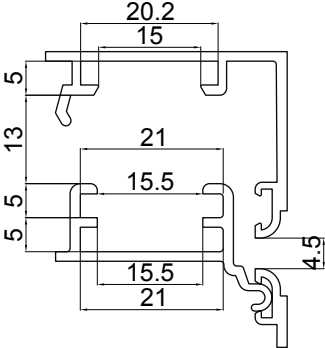
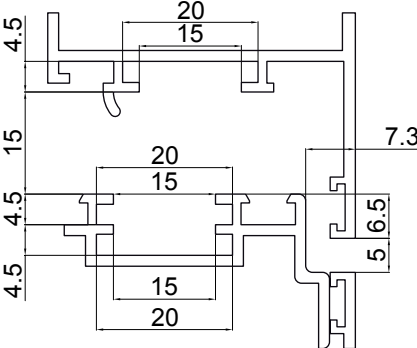
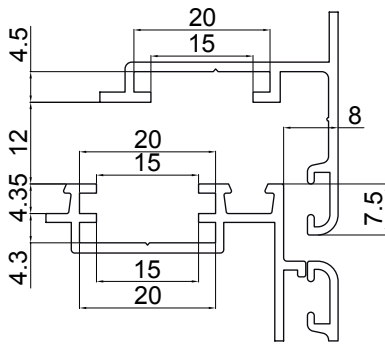
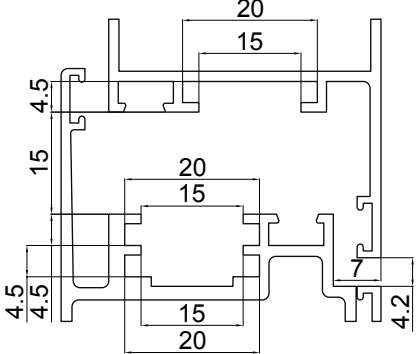
Side section

07

A01	Cava 14/18 gradino inferiore a 10 CAMERA EUROPEA <i>EURO GROOVE</i>	A02	Cava 14/18 gradino 10 CAMERA EUROPEA <i>EURO GROOVE</i>	A03	Cava 10/14 gradino 8 CAMERA EUROPEA <i>EURO GROOVE</i>
A04	Cava 10/14 gradino 10 CAMERA EUROPEA <i>EURO GROOVE</i>	A05	Cava nc gradino inferiore a 10 CAMERA EUROPEA <i>EURO GROOVE</i>	A06	Cava nc gradino 10 CAMERA EUROPEA <i>EURO GROOVE</i>
A08	Erre 40	A11	Nuovo NC 40 Sormonto	A12	Nuovo NC 40 Complanare

Nodi centrali

Central section

B01	Cava 20/15 riporto cava doppia CAMERA EUROPEA EURO GROOVE	B03	Nodo Centrale - NC CAMERA EUROPEA EURO GROOVE	B04	Erre 40
					
B06	Ekip 40	B07	All.co 5	B08	Nuovo NC 40
					
B11	All.co P4				
					

1 Finitura grezza

Mill Finish

Nessun trattamento di verniciatura.
No painting treatment.

2 Finiture Tek - Speciali - Pvd

Tek - Special - Pvd Finishes

• Finitura vintage "old": bronzo, argento; • Trattamento goldfinish: oro, inox, inox satinato; • Finiture speciali: effetto titanio; • Pvd: ottone pvd, inox satinato pvd.
• "Old" vintage finishes: bronze, silver; • Goldfinish treatment: gold, inox, satin inox; • Special finishes: titanium
• Pvd: pvd brass, pvd satin inox.

3 Ossidazione anodica

Anodized colours

• Oro lucido, inox satinato, argento, bronzo; • Argento satinato, argento lucido.
• Shiny gold, satin inox, silver, bronze; • Satin silver, shiny silver.

4 Verniciatura (RAL1)

Painting (RAL1)

RAL 9010 (bianco) - RAL 9010op (bianco opaco) - RAL 1013 (avorio) - RAL 1013OP (avorio opaco) - AVOR (avorio scuro) - NERO OPACO.
RAL 9010 (white) - RAL 9010op (mat white) - RAL 1013 (ivory) - RAL 1013OP (mat ivory) - AVOR (dark ivory) - MAT BLACK.

5 Verniciatura in altri colori (RAL2)

Painting in others colours (RAL2)

RAL 7001 grigio argento - RAL 6360 verde gotico - bronzo - RAL 9003 bianco - RAL 9001 avorio chiaro - RAL 3976 - marrone Gotico - marrone raggr. - RAL 8017 marrone - RAL 9005 nero - argento - verde scuro raggr. - RAL 6005 verde RAL 8019 marrone grigio - RAL 9420 grigio gotico - Marrone opaco - RAL 9006 argento - inox - RAL 6005OP Verde Opaco - VGRAY (Grigio Metallico).

RAL 7001 silver grey - RAL 6360 gothic green - bronze - RAL 9003 white - RAL 9001 lighr ivory - RAL 3976 - gothic brown - wrinkled brown - RAL 8017 brown - RAL 9005 black - silver - dark wrinkled green - RAL 6005 green - RAL 8019 grey brown - RAL 9420 gothic grey - mat brown - RAL 9006 silver - inox - RAL 6005OPmat green - VGRAY (metal grey).

6 Verniciatura Speciale

Special Painting

argento*, bronzo*
silver*, bronze*

*Effetto ossidato
*Anodized effect





Master Italy S.r.l - S.P. 37 Conversano - Castiglione km 0.570 - Conversano (Ba) Italy
Customer Service **+39 080.4959823** | Fax. **+39 080.4959030**
info@masteritaly.com | www.masteritaly.com